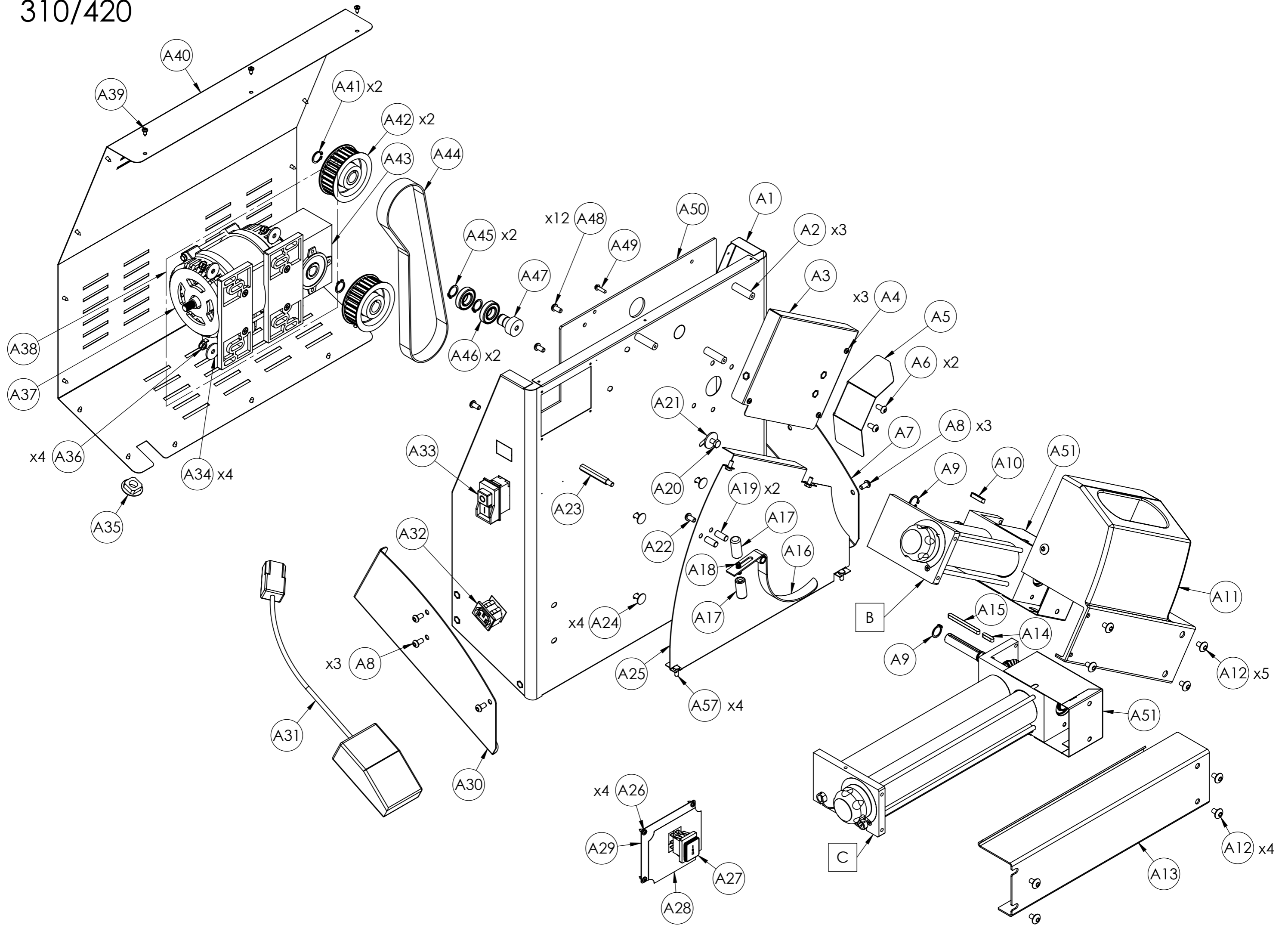
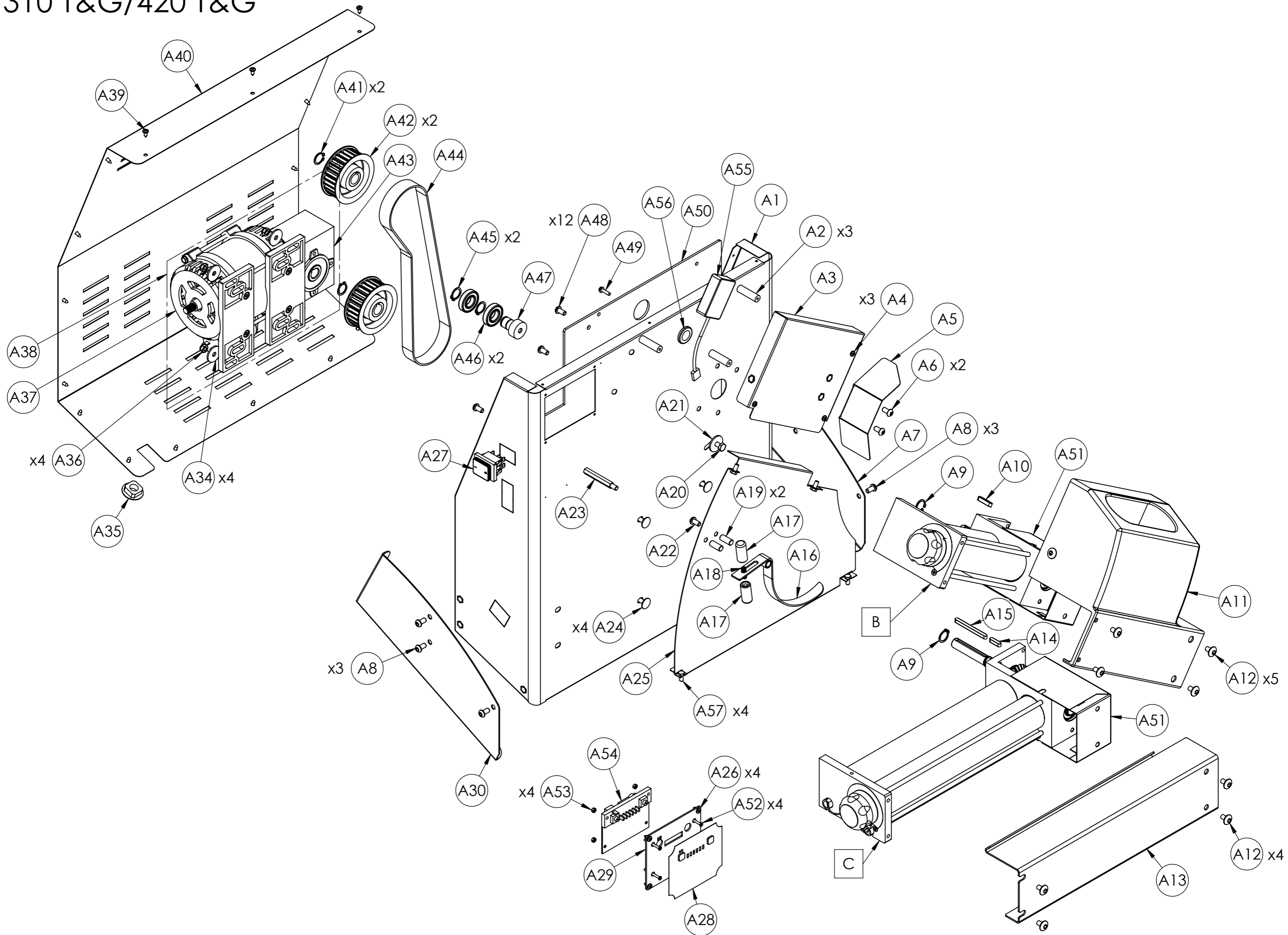


A

310/420



A 310 T&G/420 T&G



A 310 / 310 T&G / 420 / 420 T&G

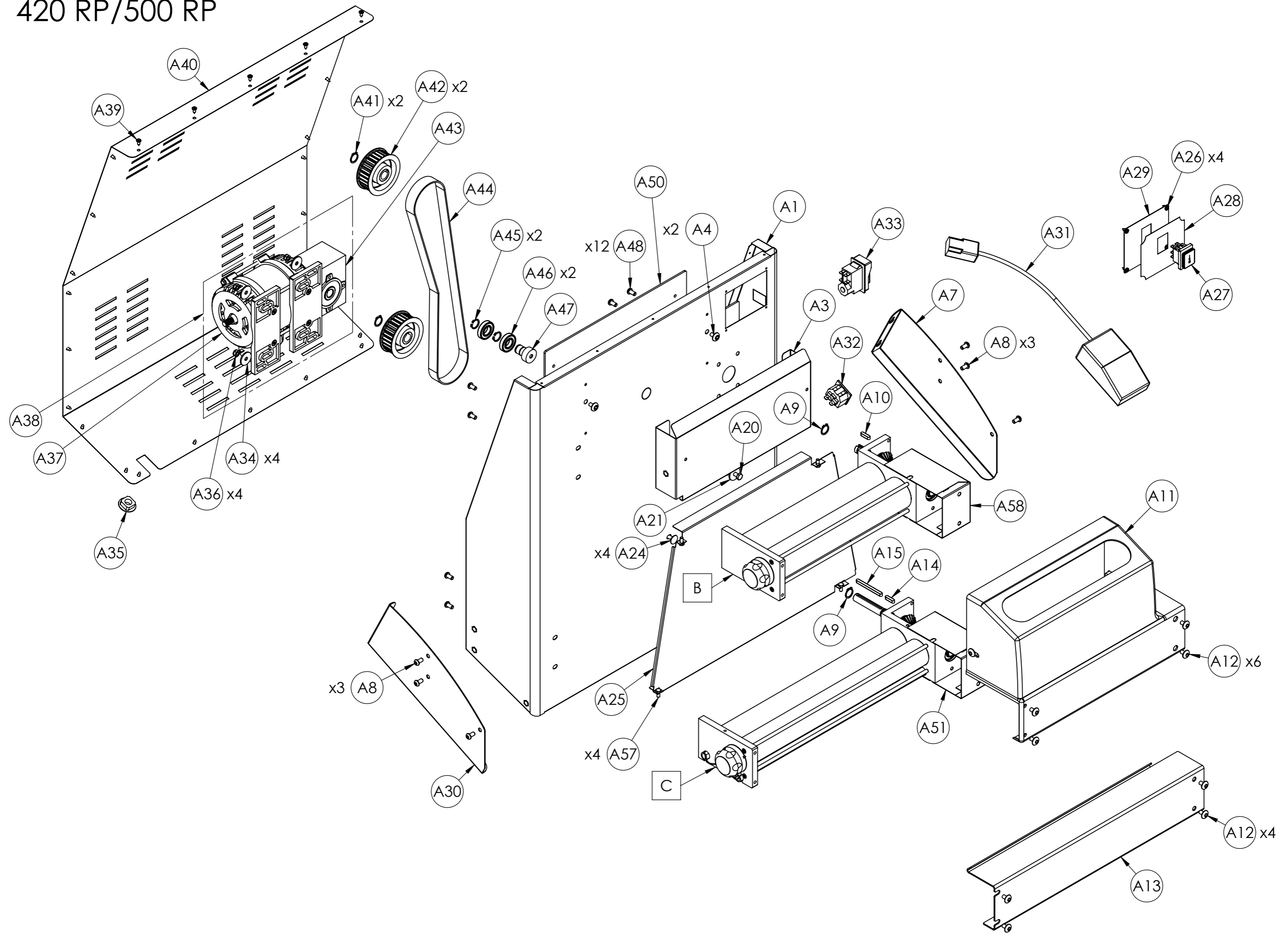
POS	DESCRIPTION	CODE			
		310	310 T&G	420	420 T&G
A1	Chassis	4T010110		4T010115	
A2	Spacer	3D010005			
A3	Upper Slide	4S010003	4S010002	4S010006	4S010007
A4	Screw	5V500180			
A5	Diverter	4D010001			
A6	Screw	5V500020			
A7	Right Foot	4P030016			
A8	Screw	5V500025			
A9	Seeger	5S500010			
A10	Tab	5L500031			
A11	Upper Protection	4P020026		4P020031	
A12	Screw	5V500022			
A13	Lower Protection	4P020006		4P020015	
A14	Tab	5L500020			
A15	Tab	5L500024			
A16	Balance	4B010001		4B010005	
A17	Counterweight	3C010001			
A18	Grub Screw	5G510001			
A19	Pin	3P030001			
A20	Screw	5V500028			
A21	Washer	5R500016			
A22	Screw	5V500025			
A23	Spacer	3D010003			
A24	Screw	5V500072			
A25	Lower Slide	4S010071		4S010074	
A26	Screw	5V500180			
A27	Switch	5I100001	5I100012	5I100001	5I100012
A28	Label	5E200150	5E200151	5E200150	5E200151
A29	Control Plate	4P100125	4P100126	4P100125	4P100126
A30	Left Foot	4P030017			
A31	Pedal	7P010100	/	7P010100	/

A 310 / 310 T&G / 420 / 420 T&G

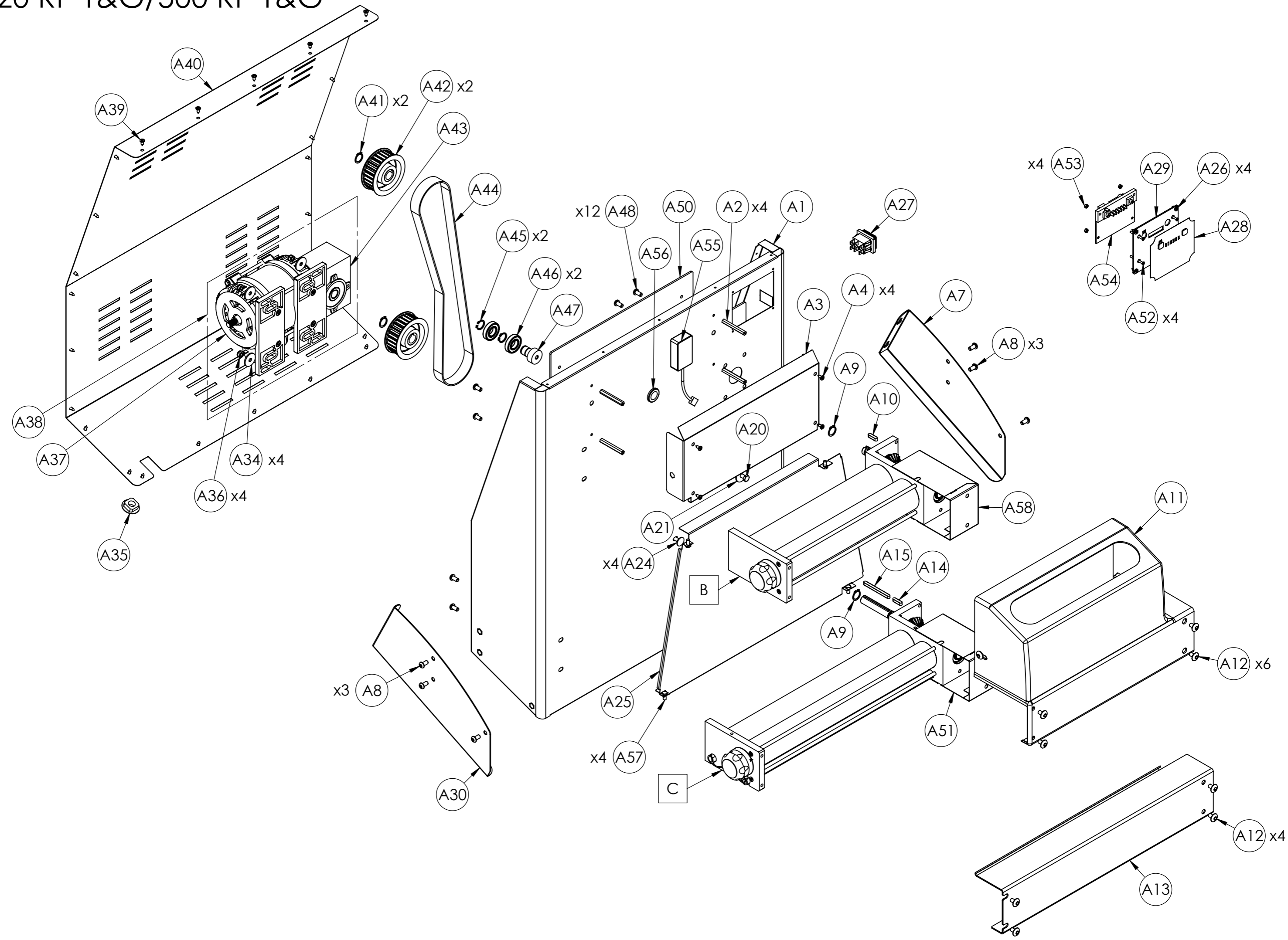
POS	DESCRIPTION	CODE			
		310	310 T&G	420	420 T&G
A32	Pedal Socket	5P200001	/	5P200001	/
A33	Magnetic switch	5I100045	/	5I100045	/
A34	Washer	5R500016			
A35	Cable gland	5P100001			
A36	Nut	5D500063			
A37	Motor	/			
A38	230V 50/60Hz Gearmotor	5M010004			
	110V 60Hz Gearmotor	5M010016			
A39	Screw	5V500180			
A40	Carter	4C010016		4C010008	
A41	Seeger	5S500010			
A42	Pulley	3P010010			
A43	Reducer	5R010001			
A44	Belt	5C020010		5C020015	
A45	Seeger	5S500010			
A46	Bearing	5C030007			
A47	Belt tensioner	3T300011			
A48	Screw	5V500025			
A49	Screw	5V500520			
A50	Plate	4P010007		4P010012	
A51	Gear Protection	4C010070			
A52	Screw	/	5V500537	/	5V500537
A53	Nut	/	5D500050	/	5D500050
A54	230V T&G Electronic Board	/	5C150030	/	5C150030
	110V T&G Electronic Board	/	5C150031	/	5C150031
A55	T&G Sensor	/	5S010070	/	5S010070
A56	Rubber Grommet	/	5P100010	/	5P100010
A57	Screw	5V500062			
B	Upper Roller Group	7G010166		7G010170	
C	Lower Roller Group	7G010168		7G010172	

A

420 RP/500 RP



A 420 RP T&G/500 RP T&G



A 420 RP / 420 RP T&G / 500 RP / 500 RP T&G

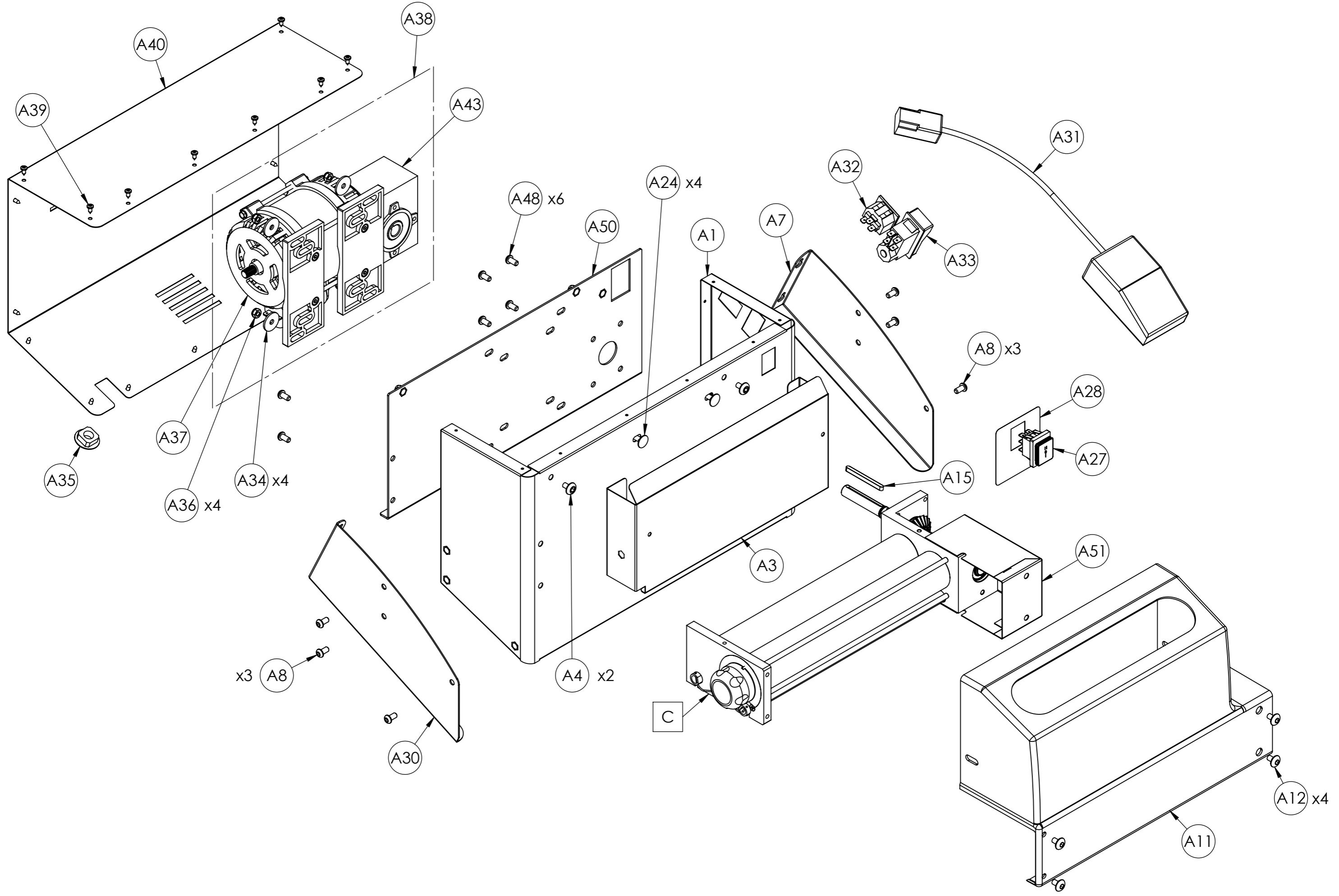
POS	DESCRIPTION	CODE			
		420RP	420 RP T&G	500 RP	500 RP T&G
A1	Chassis	4T010123		4T010120	
A2	Spacer	/	3D010006	/	3D010006
A3	Upper Slide	4S010018	4S010019	4S010018	4S010019
A4	Screw	5V500180	5V500026	5V500180	5V500026
A7	Right Foot	4P030016			
A8	Screw	5V500025			
A9	Seeger	5S500010			
A10	Tab	5L500020			
A11	Upper Protection	4P020037			
A12	Screw	5V500022			
A13	Lower Protection	4P020015		4P020045	
A14	Tab	5L500020			
A15	Tab	5L500024			
A20	Screw	5V500028			
A21	Washer	5R500016			
A24	Screw	5V500072			
A25	Lower Slide	4S010070		4S010045	
A26	Screw	5V500180			
A27	Switch	5I100001	5I100012	5I100001	5I100012
A28	Label	5E200150	5E200151	5E200150	5E200151
A29	Control Plate	4P100125	4P100126	4P100125	4P100126
A30	Left Foot	4P030017			
A31	Pedal	7P010100	/	7P010100	/
A32	Pedal Socket	5P200001	/	5P200001	/
A33	Magnetic switch	5I100045	/	5I100045	/
A34	Washer	5R500016			
A35	Cable gland	5P100001			
A36	Nut	5D500063			
A37	Motor	/			
A38	230V 50/60Hz Gearmotor	5M010004			
	110V 60Hz Gearmotor	5M010016			

A 420 RP / 420 RP T&G / 500 RP / 500 RP T&G

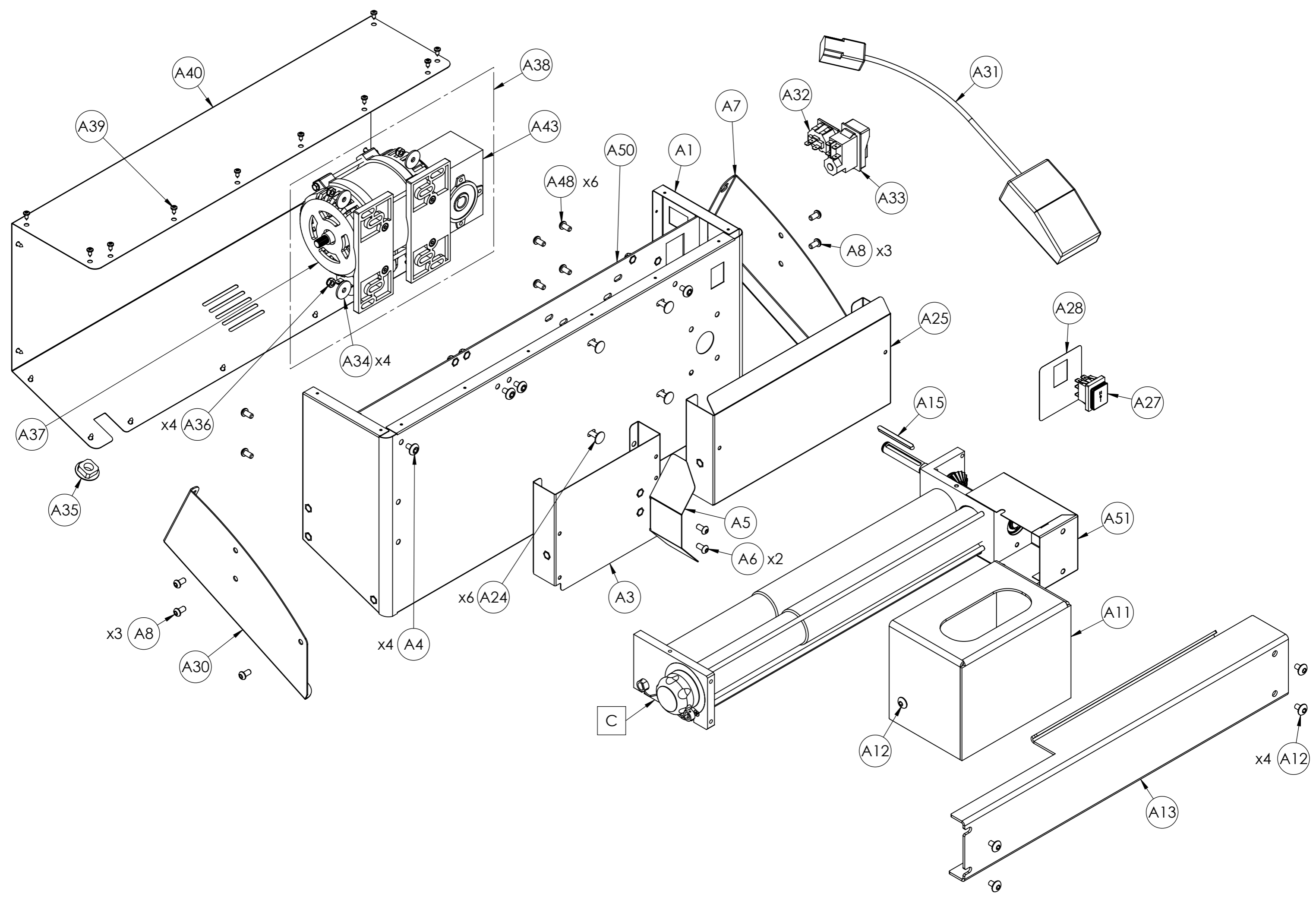
POS	DESCRIPTION	CODE			
		420RP	420 RP T&G	500 RP	500 RP T&G
A39	Screw	5V500180			
A40	Carter	4C010008		4C010019	
A41	Seeger	5S500010			
A42	Pulley	3P010010			
A43	Reducer	5R010001			
A44	Belt	5C020015			
A45	Seeger	5S500010			
A46	Bearing	5C030007			
A47	Belt tensioner	3T300011			
A48	Screw	5V500025			
A50	Plate	4P010017		4P010026	
A51	Lower Gear Protection	4C010070			
A52	Screw	/	5V500537	/	5V500537
A53	Nut	/	5D500050	/	5D500050
A54	230V T&G Electronic Board	/	5C150030	/	5C150030
	110V T&G Electronic Board	/	5C150031	/	5C150031
A55	T&G Sensor	/	5S010070	/	5S010070
A56	Rubber Grommet	/	5P100010	/	5P100010
A57	Screw	5V500062			
A58	Upper Gear Protection	4C010075			
B	Upper Roller Group	7G010174		7G010174	
C	Lower Roller Group	7G010172		7G010176	

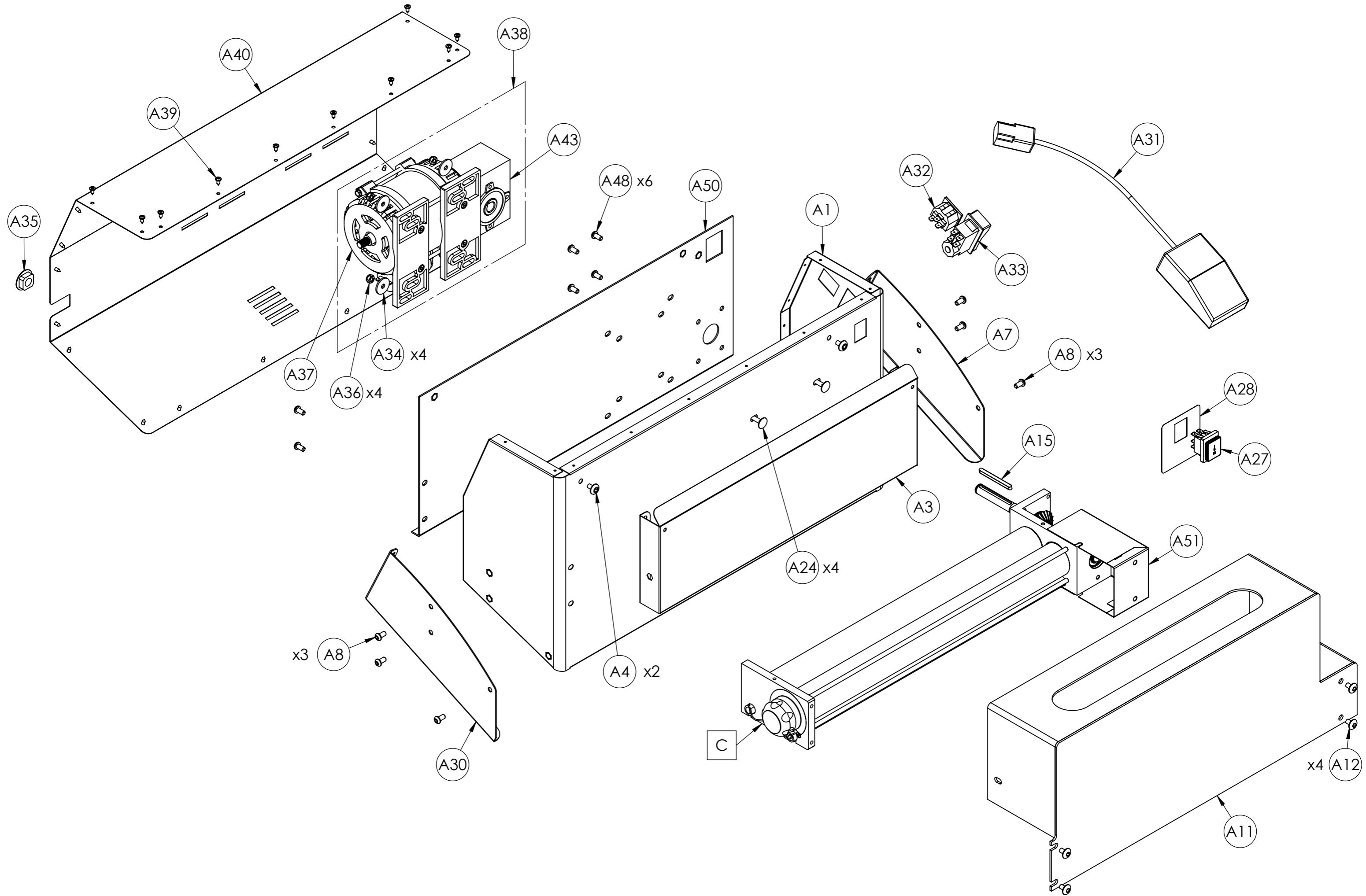
A

310/1



A 310/2





A**310/1**

/

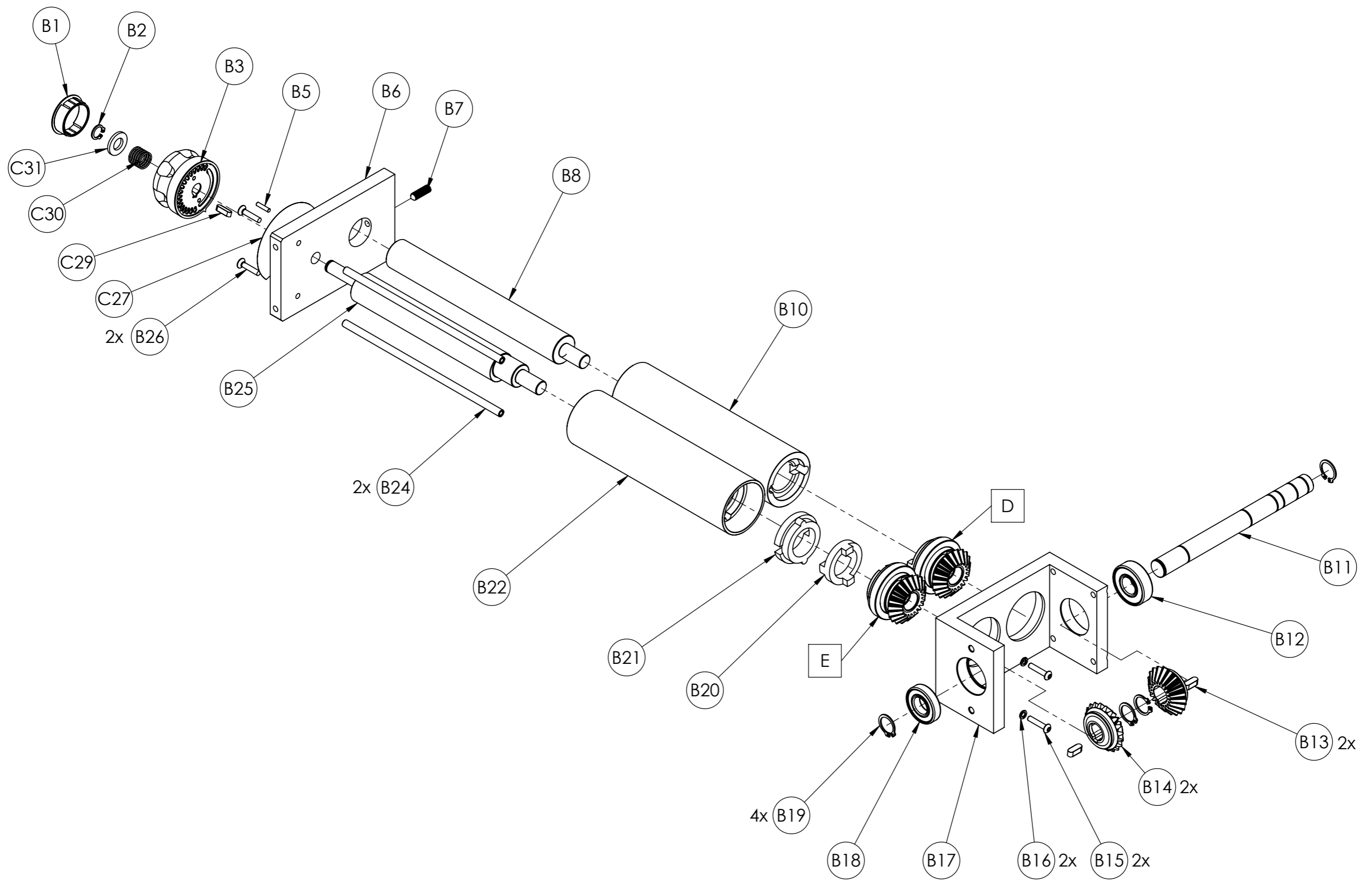
310/2

/

500/1

POS	DESCRIPTION	CODE		
		310/1	310/2	500/1
A1	Chassis	4T010004	4T010003	4T010030
A3	Slide	4S010018	4S010001	4S010050
A4	Screw	5V500026		
A5	Diverter	/	4D010001	/
A6	Screw	/	5V500020	/
A7	Right Foot	4P030002		
A8	Screw	5V500025		
A11	Protection	4P020037	4P020040	4P020044
A12	Screw	5V500022		
A13	Lower Protection	/	4P020041	/
A15	Tab	5L500024		
A24	Screw	5V500072		
A25	Right Slide	/	4S010010	/
A27	Switch	5I100001		
A28	Label	5E200917		
A30	Left Foot	4P030006		
A31	Pedal	7P010100		
A32	Pedal Socket	5P200001		
A33	Magnetic switch	5I100045		
A34	Washer	5R500016		
A35	Cable gland	5P100001		
A36	Nut	5D500063		
A37	Motor	/		
A38	230V 50/60Hz Gearmotor	5M010004		
	110V 60Hz Gearmotor	5M010016		
A39	Screw	5V500180		
A40	Carter	4C010004	4C010003	4C010015
A43	Reducer	5R010001		
A48	Screw	5V500025		
A50	Plate	4P010004	4P010003	4P010020
A51	Gear Protection	4C010070		
C	Roller Group	7G010168	7G010162	7G010176

B UPPER ROLLER GROUP

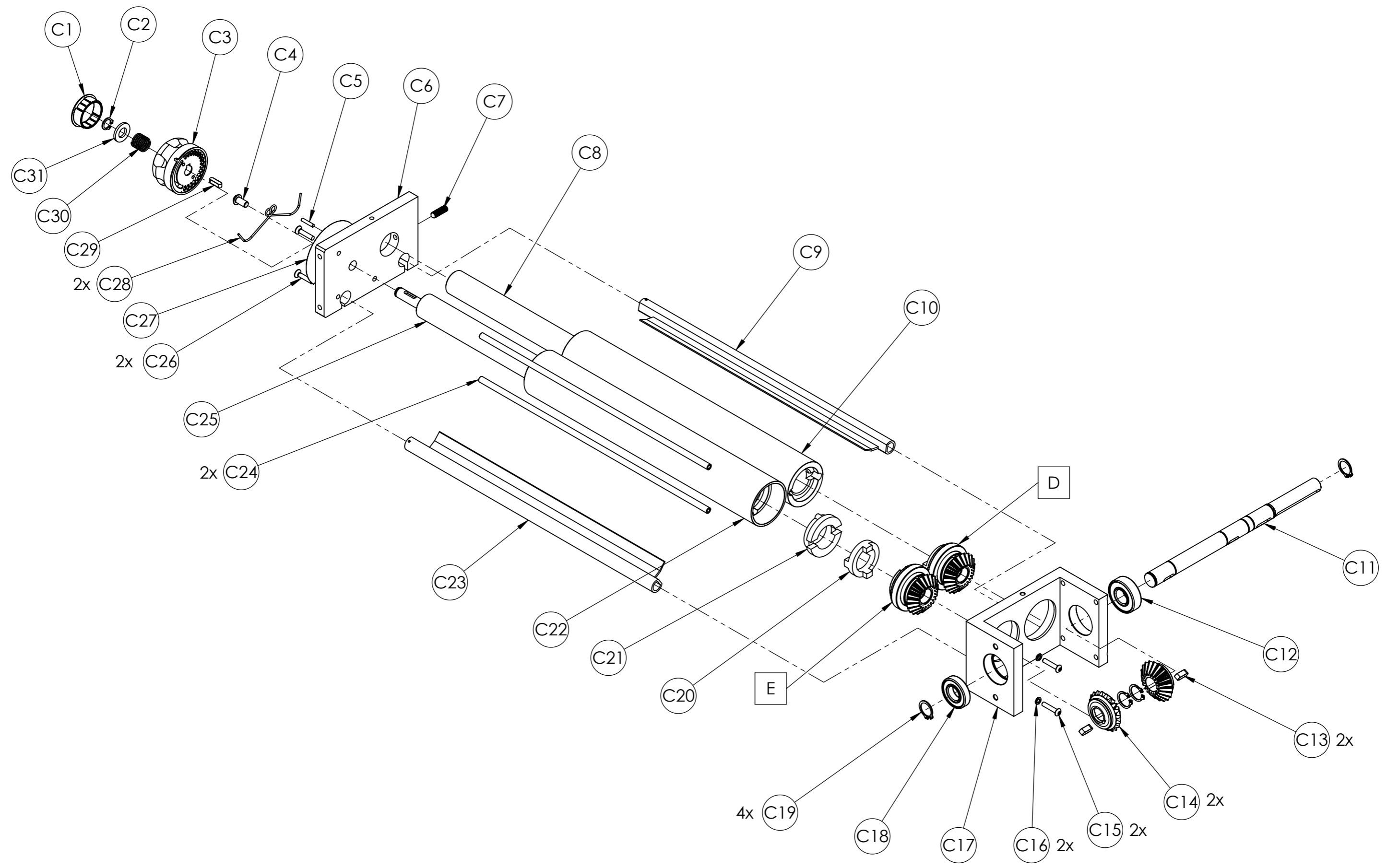


B UPPER ROLLER GROUP

POS	DESCRIPTION	CODE		
		310	420	420 RP 500 RP
B1	Knob Cap	5T100001		
B2	Seeger	5S500001		
B3	Knob	3P020001		
B5	Pin	5S510007		
B6	Flat Gear Support	3S010027	3S010038	
B7	Grub Screw	5G510001		
B8	Cylindrical Shaft	3A010032	3A010037	3A010042
B10	Cylindrical Roller	3R010001	3R010005	3R010015
B11	Motor Shaft	3A010083	3A010084	
B12	Bearing	5C030000		
B13	Tab	5L500017		
B14	Drive Gear	5I200005		
B15	Screw	5V500019		
B16	Washer	5R500028		
B17	Gear Support	3S010016	3S010021	
B18	Bearing	5C030007		
B19	Seeger	5S500010		
B20	Male Joint	5G010005		
B21	Female Joint	5G010001		
B22	Eccentric Roller	3R010040	3R010045	3R010055
B24	Rod	3T050040	3T050030	3T050035
B25	Eccentric Shaft	3A010002	3A010006	3A010011
B26	Screw	5V500017		
B27	Label	5E200035		
B28	Spring	5M500005		
B29	Tab	5L500010		
B30	Spring	5M500001		
B31	Washer	5R500010		
D	Complete Cylindrical Gear	7I010003		
E	Complete Eccentric Gear	7I010004		

C

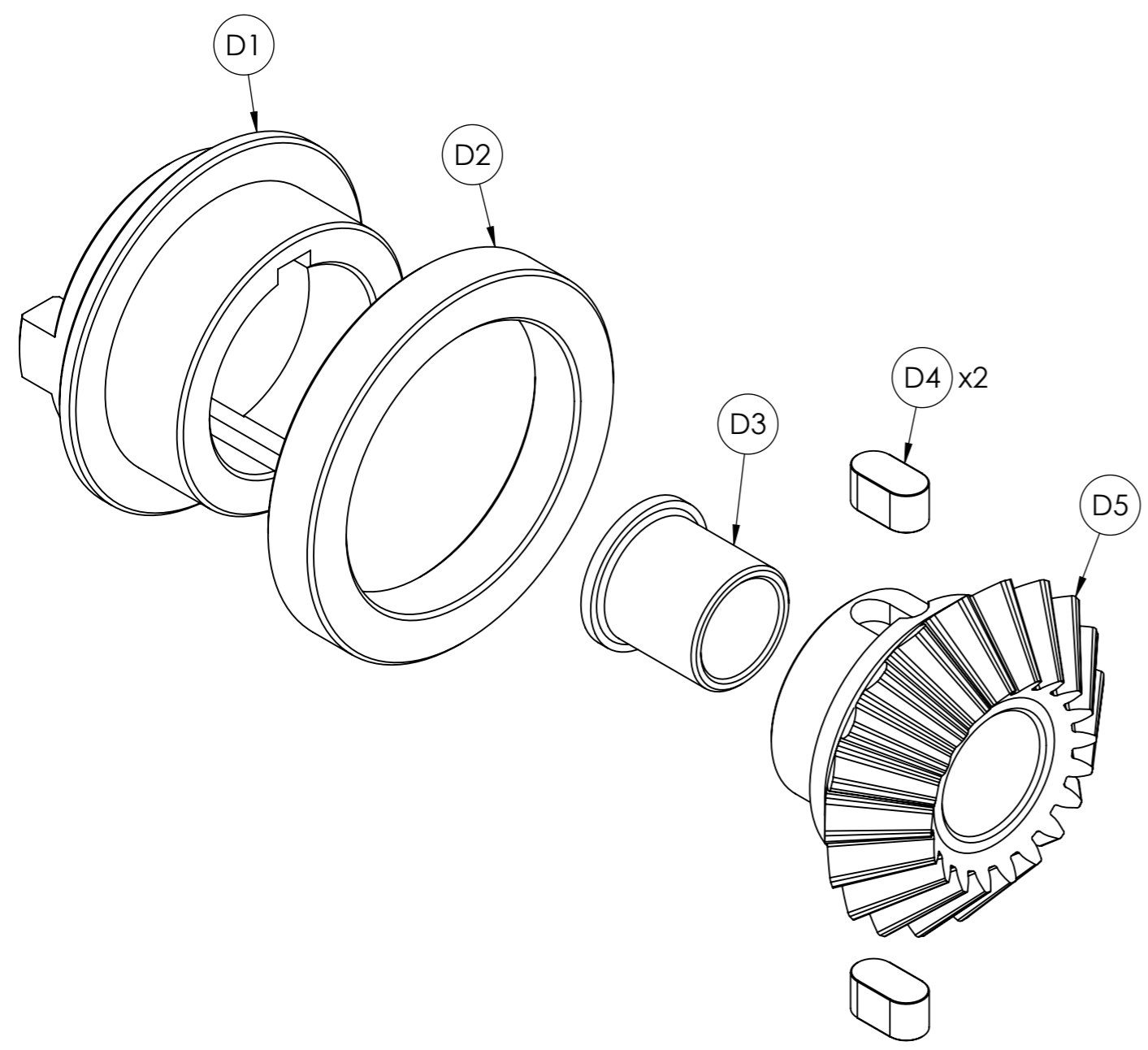
LOWER ROLLER GROUP



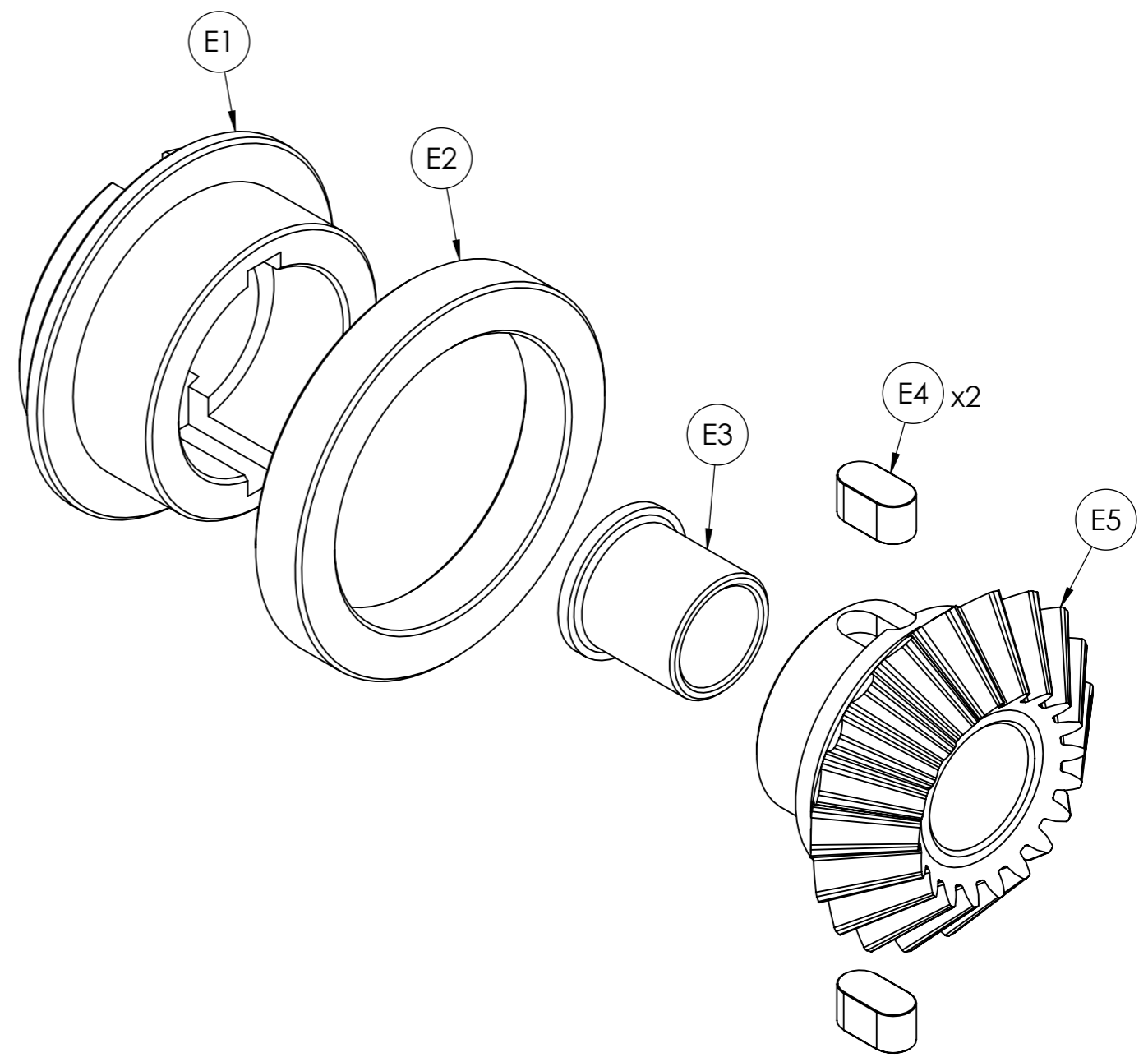
C LOWER ROLLER GROUP

POS	DESCRIPTION	CODE			
		310 310/1	310/2	420 420 RP	500 RP 500/1
C1	Knob Cap	5T100001			
C2	Seeger	5S500001			
C3	Knob	3P020001			
C4	Screw	5V500020			
C5	Pin	5S510007			
C6	Flat Gear Support	3S010032			
C7	Grub Screw	5G510001			
C8	Cylindrical Shaft	3A010042	3A010051	3A010047	3A010054
C9	Rear Scraper	3R020005	3R020001	3R020010	3R020003
C10	Cylindrical Roller	3R010010	3R010025	3R010020	3R010030
C11	Motor Shaft	3A010082			
C12	Bearing	5C030000			
C13	Tab	5L500017			
C14	Drive Gear	5I200005			
C15	Screw	5V500019			
C16	Washer	5R500028			
C17	Gear Support	3S010019			
C18	Bearing	5C030007			
C19	Seeger	5S500010			
C20	Male Joint	5G010005			
C21	Female Joint	5G010001			
C22	Eccentric Roller	3R010050	3R010065	3R010060	3R010070
C23	Front Scraper	3R020025	3R020020	3R020030	3R020023
C24	Rod	3T050035	3T050045	3T050025	3T050020
C25	Eccentric Shaft	3A010011	3A010021	3A010016	3A010024
C26	Screw	5V500017			
C27	Label	5E200035			
C28	Spring	5M500005			
C29	Tab	5L500010			
C30	Spring	5M500001			
C31	Washer	5R500010			
D	Complete Cylindrical Gear	7I010003			
E	Complete Eccentric Gear	7I010004			

D CYLINDRICAL DRIVEN GEAR



E ECCENTRIC DRIVEN GEAR



D/E COMPLETE DRIVEN GEAR

POS	DESCRIPTION	CODE	
		D CYLINDRICAL	E ECCENTRIC
1	Driven hub	3I010009	3I010008
2	Bearing	5C030008	
3	Bushing	5B100010	
4	Tab	5I500015	
5	Gear	5I200006	