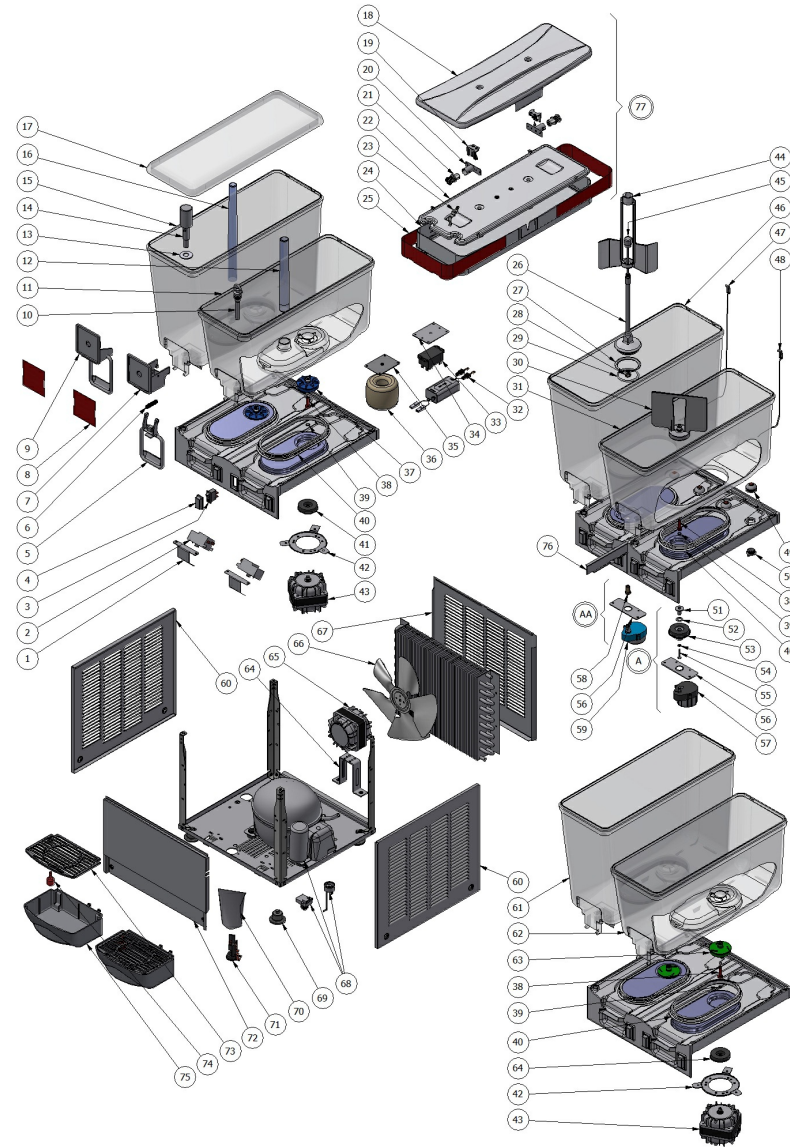


DELUXE 12-20



DELUXE 12-20

Pos.	Code	Description	Package quantity
77	33900-02100	COMPLETE LIGHT COVER	1
77	33900-02160	WHITE COMPLETE LIGHTED COVER 12/20L	1
77	33900-01800	COMPLETE LIGHTED TOP COVER 12/20 LT	1
77	33900-01860	WHITE LIGHTED TOP COVER 12/20LT TRANSM. MECHANIC MAGNETIC	1
76	22900-00700	PLASTIC I BEAM FOR CONNECTION	1
76	22900-00701	PLASTIC I BEAM FOR CONNECTION	1
76	22900-00760	PLASTIC I BEAM FOR CONNECTION	1
75	22900-03800-200	WHITE DRIP TRAY	2
75	22900-03801	BLACK DRIP TRAY 10L	2
75	22900-03800	NEW DRIP TRAY MT NHT	5
74	22900-06300	FLOAT FOR MAX LEVEL	5
73	22900-03700-200	WHITE DRIP TRAY COVER	2
73	22900-03701	BLACK DRIP TRAY COVER 10L	2
73	22900-03700	NEW DRIP TRAY COVER MT NHT	2
72	22900-17000	*****	1
72	22900-17300	DISPENSING SIDE PANEL ARCTIC DELUXE 3 BOWLS	1
72	22900-14100	DISPENSING SIDE PANEL DELUXE-EXTRA 4 BOWLS	1
72	22900-17100	*****	1
71	22800-05500	TERMINAL BLOCK WITH CABLE CLAMP	3
70	22800-12701	TERMINAL BLOCK PROTECTION	5

DELUXE 12-20

Pos.	Code	Description	Package quantity
69	22800-10000	RUBBER LEG	10
68	[[COMPRESSOR START RELAY	0
68	[[[COMPRESSOR MOTOR PROTECTOR	0
68	[[[[COMPRESSOR CONDENSER	0
67	22800-46800	HT10,11,20 L. 1 BOWL BACK PANEL	1
67	22900-12320	BACK PANEL	1
67	22900-12330	BACK PANEL DELUXE 4	1
67	22900-12310	BACK PANEL DELUXE 2 BOWLS	1
66	22800-13200	? 230 mm SPECIAL SUCTION FAN 60 HZ	2
66	21907-00000	SUCTION FAN BLADE ? 230 mm	1
65	22800-07601	MOTOR FOR FAN WITH BRACKET 115/60 HT20/1	1
65	21487-00000	MOTOR 16W. 220V. 50HZ	1
65	21678-00000	FAN MOTOR 10W	1
65	22800-07600	FAN MOTOR WITH BRACKET 230V 50/60HZ	1
65	22800-04709	FAN MOTOR 16W 115V 60HZ UL	2
65	22800-04706	PUMP MOTOR 115V 60HZ 10W	1
64	33800-00803	? 7 mm MOTOR MAGNET	2
64	21679-00000	FAN MOTOR BRACKET	1
63	33900-01201	IMPELLER MAESTRALE JOLLY 5/8/12/20 LT 50/60HZ	3
62	22900-00010	12L. BOWL POLYCARBONATE (SUBM.PUMP)	1

DELUXE 12-20

Pos.	Code	Description	Package quantity
61	22900-04810	20 L. BOWL POLYCARBONATE (SUB.PUMP)	1
60	22800-00308	BLACK SIDE PANEL MT/FBM UL	1
60	22800-33100	WHITE SIDE PANEL MT UL	1
60	22800-00300	SIDE PANEL RIGHT/LEFT INOX	1
59	33800-06710	MIXER MOTOR 230/240V 50/60Hz AA FOR 10/20 LITERS, TURIA,A12/19	2
59	33800-06711	115V 60Hz STIRRER MOTOR	2
58	22900-05800	PIN FOR CENTRAL SHAFT	1
57	22900-03501	MIXER MOTOR 115V 60Hz	3
57	22900-03500	MIXER MOTOR 208/240V 50/60Hz 12/20L IMPELLER	3
56	22900-02504	PUMP MOTOR BRACKET	1
55	10500-14025	*****	1
54	10520-04012	*****	1
53	33900-01011	IMPELLER MIXER MOTOR	3
52	22900-02503	WASHER	5
51	22900-02502	CENTRAL PIVOT	1
50	22800-22900	METAL CONTACT	1
49	22800-22802	BLACK FLEXIBLE PART FOR CONTACT	3
49	22800-22800	FLEXIBLE LIGHT CONTACT	1
48	22900-06500	LIGHT WIRE	1
47	22900-06501	CONTACT SPRING	1

DELUXE 12-20

Pos.	Code	Description	Package quantity
46	22900-04822	20 L. BOWL (MIXER)	1
45	22900-05600	DRIVING SHAFT 12 LT AA	3
44	22900-05401	MIXER	2
44	22900-05400	MIXER FOR 12 LT MACHINE	2
43	22800-04705	PUMP MOTOR 220/240V 50Hz 10W	1
43	22800-04706	PUMP MOTOR 115V 60HZ 10W	1
43	22800-04708	PUMP MOTOR 220V 60Hz	1
42	22800-04800	PUMP MOTOR BRACKET	2
41	33800-00803	? 7 mm MOTOR MAGNET	2
40	22800-17200	BOWL GASKET	5
39	22040-00000	O-RING SENSOR	10
38	22900-00600	CENTRAL PIVOT	2
37	33900-01204	PUMP BLUE IMPELLER 12-20LT 60 HZ 5-8LT 50 HZ	3
37	33900-01200	PUMP IMPELLER FOR 11 AND 20 L. BOWL	3
36	22800-18241	TRANSFORMER 115V 50/60 HZ	1
36	22800-18240	TRANSFORMER 230V 50/60 HZ	1
35	2Y000-11500	*****	1
34	2R000-02130	*****	1
33	10028-04403	RELAY 24V DC 25A	1
32	2Q000-04650	POWER SUPPLY	1

DELUXE 12-20

Pos.	Code	Description	Package quantity
31	22900-00020	12 L. BOWL AA (STIRRER)	1
30	33900-01202	STIRRER	3
29	22900-05700	OR 04187 FOR STIRRER, MACHINE WITH MECHANICAL TRANSMISSION	5
28	10533-01303	BRASS NUT 10/28 13x3	1
27	22900-05710	CENTRAL SHAFT GASKET (STIRRER)	5
26	22900-05500	CENTRAL SHAFT FOR 12 LT UNIT MECH.TRANSMISSION	1
26	22900-05501	CENTRAL SHAFT MECHANIC TRANSMISSION	1
25	22900-06401	RED PICTURE FOR TOP LIGHT COVER	1
24	22900-06010	*****	1
24	22900-06000	*****	1
23	22800-11701	TOP COVER LIGHT CONTACT BOWL 15L	5
22	22900-06100	*****	1
21	10028-03810	BULB 24V LED 5000/5500K	2
20	10028-04200	BULB SOCKET NEW TYPE	1
19	10028-04201	BULB SOCKET BRACKET NEW TYPE	5
18	22900-06200	COVER UPPER PART	1
18	22900-06202	COVER UPPER PART	1
18	22900-06260	LIGHTED TOP COVER (UPPER)	1
17	22900-00100	12/20L. BOWL COVER	1
16	22900-00210	SPRAY TUBE 20L	1

DELUXE 12-20

Pos.	Code	Description	Package quantity
16	22900-00200	SPRAY TUBE 20L	3
15	22900-04800	20 L.BOWL P	1
14	22800-21900	STAINLESS STEEL PISTON	2
13	10028-02503	FAUCET PISTON GASKET	5
12	22900-00201	SPRAY TUBE FOR 12 L	3
12	22900-00211	SPRAY TUBE 12 L	1
11	22900-00000	12L. BOWL POLYCARBONATE (PUMP)	1
10	21703-00000	PINCH TUBE	10
9	22900-00506	LEVER FOR GRAVITY FAUCET	1
9	22900-00500	LEVER FOR GRAVITY FAUCET	3
8	10029-00010	PICTURE	5
7	22900-00800	RED FAUCET COVER ARCTIC	2
6	22800-02600	FAUCET SPRING	10
5	22900-00501	PUSH HANDLE FOR PINCH TUBE	2
4	22800-05100	SWITCH CAP	5
3	22800-24302	2-POSITION SWITCH	3
2	21087-00010	THERMOSTAT MOD. K50B FOR COLD DISPENSERS	2
1	22900-04300	*****	1