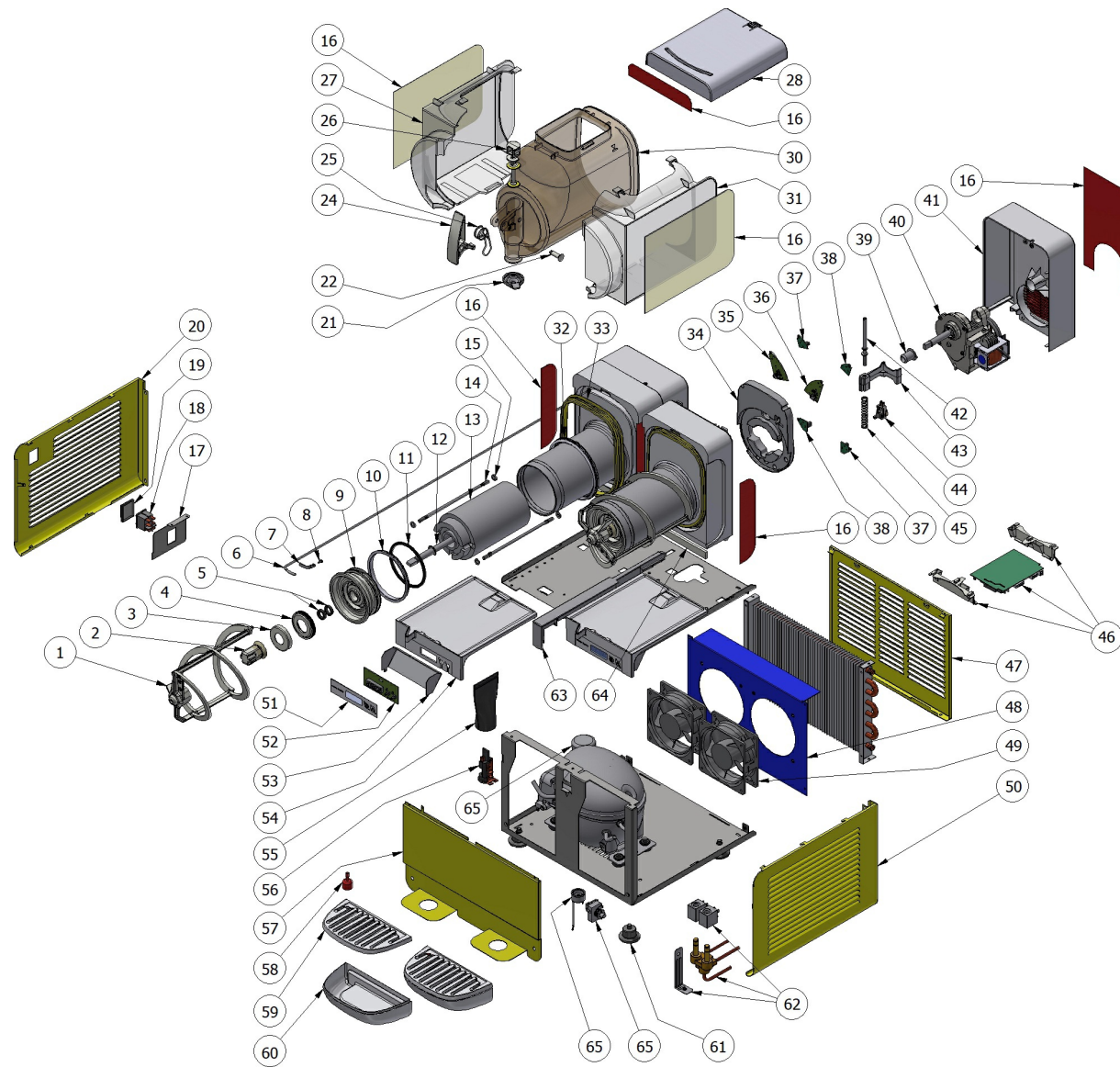


ICON 3



ICON 3

Pos.	Code	Description	Package quantity
65	[[COMPRESSOR START RELAY	0
65	[[[COMPRESSOR MOTOR PROTECTOR	0
65	[[[[COMPRESSOR CONDENSER	0
64	2Q000-05800	INSULATING BETWEEN EVAP.SUPPORT AND CONDENSATE COLLECTOR TRAY	1
63	2W000-05400	PLASTIC BEAM FOR CONNECTION	1
63	2W000-05401	PLASTIC BEAM FOR CONNECTION	1
62	22800-23748	SOLENOID VALVE COIL 230/240V 50HZ CEME	2
62	22800-23745	SOLENOID VALVE COIL 230-240V 50HZ OLAB	2
62	22800-23749	SOLENOID VALVE COIL 115/60	2
62	22800-23746	SOLENOID VALVE COIL 115/60 OLAB	2
62	22800-23734	SOLENOID VALVE BODY 1WAY CEME	1
62	22800-23733	SOLENOID VALVE BODY 1WAY OLAB	1
62	22800-23738	2-WAY VALVE BODY ?10mm CEME	1
62	22800-23735	2-WAYS VALVE BODY ?10mm OLAB	1
62	22800-23739	3 WAY VALVE BODY ?10mm CEME	1
62	22800-23736	3 WAY VALVE BODY ?10mm OLAB	1
61	22800-10000	RUBBER LEG	10
60	2W000-03000	DRIP TRAY	2
60	2W000-03001	DRIP TRAY BLACK	2
59	2W000-03100	DRIP TRAY COVER	2

ICON 3

Pos.	Code	Description	Package quantity
59	2W000-03101	DRIP TRAY COVER BLACK	2
58	22900-06300	FLOAT FOR MAX LEVEL	5
57	2W000-00100	DISPENSING SIDE PANEL	1
57	2W000-00101	*****	1
57	2W000-05500	*****	1
57	2W000-05501	*****	1
57	2W000-05600	*****	1
57	2W000-05601	*****	1
56	22800-05500	TERMINAL BLOCK WITH CABLE CLAMP	3
55	22800-12701	TERMINAL BLOCK PROTECTION	5
54	2W000-00700	UPPER DRIP PLATE	1
54	2W000-00701	UPPER DRIP PLATE BLACK	1
53	2W000-08000	*****	1
52	2W000-01700	DISPLAY CARD	1
51	2W000-01600	KEYBOARD STICKERS	1
51	2W000-01601	KEYBOARD STICKERS	1
50	2W000-00200	*****	1
50	2W000-00201	*****	1
49	22800-07600	FAN MOTOR WITH BRACKET 230V 50/60HZ	1
48	2W000-03210	*****	1

ICON 3

Pos.	Code	Description	Package quantity
47	2W000-00400	*****	1
47	2W000-00401	*****	1
47	2W000-05700	*****	1
47	2W000-05701	*****	1
47	2W000-05800	*****	1
47	2W000-05801	*****	1
46	22700-00630	ELECTRONIC DEVICE 3 BOWLS ETC	1
46	22700-00631	ELECTRONIC DEVICE FOR DISPLAY 3V 115V	1
46	2W000-05301	POWER BOARD RIGHT SLIDE	1
46	2W000-05311	POWER BOARD RIGHT SLIDE	1
46	22700-00610	ELECTRONIC DEVICE FOR ETC VERSION	1
46	22700-00621	ELECTRONIC DEVICE FOR DISPLAY 2V 115V	1
46	2U000-09500	POWER BOARD RIGHT SLIDE	1
46	2U000-09501	POWER BOARD LEFT SLIDE	1
46	22700-00610	ELECTRONIC DEVICE FOR ETC VERSION	1
46	22700-00611	ELECTRONIC DEVICE FOR DISPLAY 1V 115V	1
46	2W000-05300	POWER BOARD RIGHT SLIDE	1
46	2W000-05310	POWER BOARD RIGHT SLIDE	1
45	2W000-02800	DENSITY REGULATION SPRING	1
44	2U000-10110	MICROSWITCH 6-10L R290	1

ICON 3

Pos.	Code	Description	Package quantity
43	2U000-09760	SPRING GUIDE BLOCK	1
42	2U000-10000	DENSITY REGULATION SCREW B.FROZEN6	1
41	2W000-01800	REAR COVER	1
41	2W000-01801	REAR COVER BLACK	1
40	3W000-00810	GEARMOTOR 230V 50HZ	1
40	3W000-00101	INDUCTION MOTOR 115V/60HZ	1
40	3W000-00102	INDUCTION MOTOR 220V/60HZ	1
39	22800-22401	GREY FRONT BUSHING FOR GEAR MOTOR	10
38	2U000-05610	LEFT LED BOARD	1
37	2U000-05600	RIGHT LED BOARD	1
36	2U000-05631	LEFT LED BOARD	1
36	2U000-05630	LEFT LED BOARD	1
35	2U000-05621	RIGHT LED BOARD	1
35	2U000-05620	RIGHT LED BOARD	1
34	2W000-05100	*****	1
33	2W000-01500	BOWL GASKET NG MICRO ICON	5
32	22700-00100	EVAPORATOR BACK GASKET	2
31	2W000-01200	ENERGY RECOVER RIGHT	1
30	2W000-01000	BOWL B-CUBE/ ICON	1
28	2W000-01100	COVER	1

ICON 3

Pos.	Code	Description	Package quantity
28	2W000-01101	COVER BLACK	1
28	2W000-01102	COVER WHITE	1
27	2W000-01300	ENERGY RECOVER LEFT	1
26	2Q000-01600	FAUCET PISTON	2
25	2Q000-02100	FAUCET SPRING	2
24	2Q000-01500	FAUCET HANDLE MINIGEL	2
24	2Q000-01501	BLACK FAUCET HANDLE 6/10 L	2
24	2Q000-01502	FAUCET HANDLE	2
24	2Q000-01500-503	FAUCET HANDLE MINIGEL	2
22	2Q000-05300	WHITE PIN FOR FAUCET LEVER	5
22	2Q000-05301	BLACK PIN FOR FAUCET LEVER	5
22	2Q000-05302	RED PIN FOR FAUCET LEVER	5
22	2Q000-05362	GREEN PIN FOR FAUCET LEVER	5
21	22800-24900	FAUCET RESTRICTOR CAP	5
20	2W000-00300	*****	1
20	2W000-00301	*****	1
19	2W000-00890	SWITCH CAP	1
18	22800-24200	3-POSITIONS SWITCH	3
17	2W000-00500	SWITCH SUPPORT BRACKET	1
16	2W000-07300	*****	1

ICON 3

Pos.	Code	Description	Package quantity
16	2W000-07400	*****	1
16	2W000-07500	*****	1
16	2W000-07200	*****	1
16	2W000-07100	*****	1
16	2W000-07000	*****	1
15	10522-26000	PLAIN WASHER	1
14	2W000-02600	EVAPORATOR TIE ROD FOR NG-MICRO	1
13	2W000-02500	EVAPORATOR INSULATING MATERIAL	1
12	2W000-03500	EXTENSION FOR MOTOR SHAFT	1
11	22700-02300	ROTOR HOUSING O-RING	2
10	22700-00000	FRONT GASKET EVAPORATOR	2
9	2Q000-02000	EVAPORATOR CAP	1
8	10512-12909	SCREW AF TC 2,9 X 9,5 INOX	1
7	22700-01001	TEMPERATURE PROBE HOLDER	2
6	22700-02900	TEMPERATURE PROBE	2
5	22800-22615	? 20 mm SEALING RING	5
4	2Q000-06300	GASKET FOR EVAPORATOR PLUG CAP	1
3	2Q000-06400	CAP FOR EVAPORATOR PLUG	1
2	2Q000-01900	HEXAGONAL COUPLING FOR SHAFT	2
1	2W000-01400	OUTER SPIRAL	2