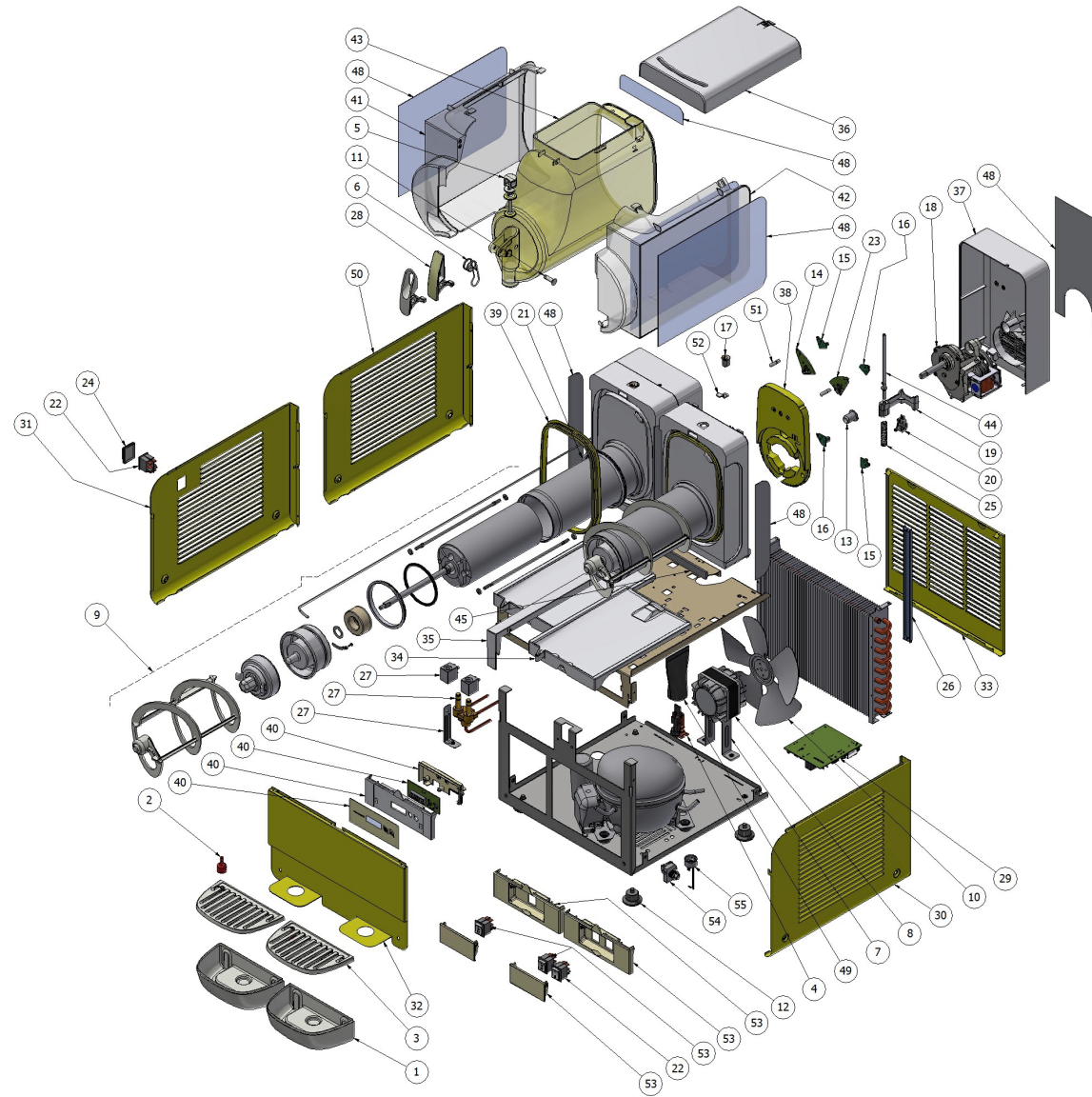


ICON 6 EASY ETC



ICON 6 EASY ETC

Pos.	Code	Description	Package quantity
55	[[[COMPRESSOR MOTOR PROTECTOR	0
54	[[COMPRESSOR START RELAY	0
53	22800-24302	2-POSITION SWITCH	3
53	22800-24203	3-POSITIONS SWITCH	3
53	2W000-00801	2-POSITION SWITCH	1
53	22700-20150	*****	1
53	22700-20151	*****	1
53	22700-20160	*****	1
53	22700-20161	*****	1
53	22700-20170	*****	1
53	22700-20171	*****	1
53	22700-20261	*****	1
53	22700-20269	*****	1
52	2Q000-05000	LEVER FOR LOCK	1
51	2Q000-08500	MAGNIFIER FOR LEDS	1
50	22700-21900	*****	1
50	22700-21901	*****	1
49	22800-12701	TERMINAL BLOCK PROTECTION	5
48	22700-20570	*****	1
48	22700-20550	*****	1

ICON 6 EASY ETC

Pos.	Code	Description	Package quantity
48	22700-20700	*****	1
48	22700-20800	RIGHT SHOULDER GRAPHIC STICKER	1
48	22700-20900	*****	1
48	22700-20600	*****	1
45	22700-20255	INSULATING BETWEEN EVAP.SUPPORT AND CONDENSATE COLLECTOR TRAY	1
44	2U000-10000	DENSITY REGULATION SCREW B.FROZEN6	1
43	22700-20300	BOWL 6L	1
42	22700-20280	ENERGY RECOVER ICON 6 RIGHT SIDE	1
41	22700-20270	ENERGY RECOVER ICON 6 LEFT SIDE	1
40	22700-20510	*****	1
40	22700-20511	*****	1
40	22700-20100	*****	1
40	22700-21101	*****	1
40	2W000-01700	DISPLAY CARD	1
40	22700-20260	*****	1
39	22700-20265	BOWL GASKET 6L	1
38	22700-20264	REAR WALL INSULATION	1
37	22700-20200	*****	1
37	22700-20201	*****	1
36	22700-20350	COVER 6L	1

ICON 6 EASY ETC

Pos.	Code	Description	Package quantity
36	22700-20351	*****	1
36	22700-20352	WHITE TOP COVER FOR ICON 6 BOWL	1
35	22700-20262	*****	1
35	22700-20253	*****	1
34	22700-20250	*****	1
34	22700-20251	*****	1
33	22700-21350	*****	1
33	22700-21351	*****	1
33	22700-21352	*****	1
33	22700-21450	*****	1
33	22700-21451	*****	1
33	22700-21452	*****	1
33	22700-21550	*****	1
33	22700-21552	*****	1
32	22700-21050	*****	1
32	22700-21051	*****	1
32	22700-21150	*****	1
32	22700-21151	*****	1
32	22700-21250	*****	1
31	22700-21700	*****	1

ICON 6 EASY ETC

Pos.	Code	Description	Package quantity
31	22700-21701	*****	1
30	22700-21600	*****	1
30	22700-21601	*****	1
29	22700-00610	ELECTRONIC DEVICE FOR ETC VERSION	1
29	22700-00611	ELECTRONIC DEVICE FOR DISPLAY 1V 115V	1
29	2W000-05300	POWER BOARD RIGHT SLIDE	1
29	2W000-05310	POWER BOARD RIGHT SLIDE	1
29	2U000-12340	MASTER BOARD FOR R290	1
29	2W000-05301	POWER BOARD RIGHT SLIDE	1
29	2W000-05311	POWER BOARD RIGHT SLIDE	1
29	2U000-02601	POWER BOARD 1-3 BOWLS FOR B.FROZEN 6/10 L	1
29	2Q000-03900	RIGHT HOLDER FOR POWER BOARD	1
29	2Q000-03910	LEFT HOLDER FOR POWER BOARD	1
29	22700-00620	ELECTRONIC DEVICE 2 BOWLS ETC	1
29	22700-00621	ELECTRONIC DEVICE FOR DISPLAY 2V 115V	1
29	2U000-09501	POWER BOARD LEFT SLIDE	1
29	2U000-12330	POWER BOARD FOR R290 NG EASY 2-3 BOWLS	1
29	2U000-02701	POWER BOARD 2 BOWLS FOR B-FROZEN 6/10 L	1
29	2U000-09500	POWER BOARD RIGHT SLIDE	1
29	22700-00630	ELECTRONIC DEVICE 3 BOWLS ETC	1

ICON 6 EASY ETC

Pos.	Code	Description	Package quantity
29	22700-00631	ELECTRONIC DEVICE FOR DISPLAY 3V 115V	1
28	2Q000-01500	FAUCET HANDLE MINIGEL	2
28	2Q000-01501	BLACK FAUCET HANDLE 6/10 L	2
28	2Q000-01502	FAUCET HANDLE	2
28	2Q000-01500-503	FAUCET HANDLE MINIGEL	2
27	22800-23748	SOLENOID VALVE COIL 230/240V 50HZ CEME	2
27	22800-23745	SOLENOID VALVE COIL 230-240V 50HZ OLAB	2
27	22800-23749	SOLENOID VALVE COIL 115/60	2
27	22800-23746	SOLENOID VALVE COIL 115/60 OLAB	2
27	22800-23734	SOLENOID VALVE BODY 1WAY CEME	1
27	22800-23733	SOLENOID VALVE BODY 1WAY OLAB	1
27	22800-23735	2-WAYS VALVE BODY ?10mm OLAB	1
27	22800-23738	2-WAY VALVE BODY ?10mm CEME	1
27	22800-23736	3 WAY VALVE BODY ?10mm OLAB	1
27	22800-23739	3 WAY VALVE BODY ?10mm CEME	1
26	22700-20266	*****	1
25	2W000-02800	DENSITY REGULATION SPRING	1
24	2W000-00890	SWITCH CAP	1
23	2U000-05631	LEFT LED BOARD	1
23	2U000-05630	LEFT LED BOARD	1

ICON 6 EASY ETC

Pos.	Code	Description	Package quantity
22	22800-24200	3-POSITIONS SWITCH	3
21	22700-00100	EVAPORATOR BACK GASKET	2
20	2U000-10110	MICROSWITCH 6-10L R290	1
19	2U000-09760	SPRING GUIDE BLOCK	1
18	3W000-00810	GEARMOTOR 230V 50HZ	1
18	3W000-00101	INDUCTION MOTOR 115V/60HZ	1
18	3W000-00102	INDUCTION MOTOR 220V/60HZ	1
17	22805-02210	LOCK FOR TOP COVER	1
16	2U000-05610	LEFT LED BOARD	1
15	2U000-05600	RIGHT LED BOARD	1
14	2U000-05621	RIGHT LED BOARD	1
14	2U000-05620	RIGHT LED BOARD	1
13	22800-22401	GREY FRONT BUSHING FOR GEAR MOTOR	10
12	22800-10000	RUBBER LEG	10
11	2Q000-05300	WHITE PIN FOR FAUCET LEVER	5
11	2Q000-05301	BLACK PIN FOR FAUCET LEVER	5
11	2Q000-05302	RED PIN FOR FAUCET LEVER	5
11	2Q000-05362	GREEN PIN FOR FAUCET LEVER	5
10	22800-13200	? 230 mm SPECIAL SUCTION FAN 60 HZ	2
9	22700-00300	OUTER SPIRAL FROZ.BEV.DISP. 6 LT	1

ICON 6 EASY ETC

Pos.	Code	Description	Package quantity
9	33700-00760	COMPL.OUTER ROTOR FROZ.BEV.DISP.6 L	2
9	22700-01001	TEMPERATURE PROBE HOLDER	2
9	10512-12909	SCREW AF TC 2,9 X 9,5 INOX	1
9	22700-02900	TEMPERATURE PROBE	2
9	22700-00500	ROTOR HOUSING FOR EVAPORATOR	1
9	22700-00000	FRONT GASKET EVAPORATOR	2
9	10028-02805	INNER ROTOR WASHER	10
9	33800-09611	INNER ROTOR	1
9	22700-02300	ROTOR HOUSING O-RING	2
9	22700-20400	*****	1
9	22700-00901	EVAPORATOR SCREW STAY	2
9	10522-26000	PLAIN WASHER	1
9	22700-01302	INSULATION FOAMING FOR EVAPORATOR INSIDE FROZ.BEV.DISP. 6 LT	1
8	21487-00000	MOTOR 16W. 220V. 50HZ	1
7	21679-00000	FAN MOTOR BRACKET	1
6	2Q000-02100	FAUCET SPRING	2
5	2Q000-01600	FAUCET PISTON	2
4	22800-05500	TERMINAL BLOCK WITH CABLE CLAMP	3
3	2Q000-01100	DRIP TRAY COVER	2
3	2Q000-01101	DRIP TRAY COVER BLACK	2

ICON 6 EASY ETC

Pos.	Code	Description	Package quantity
2	22900-06300	FLOAT FOR MAX LEVEL	5
1	2Q000-01201	DRIP TRAY BL	1
1	2Q000-01200	DRIP TRAY	1