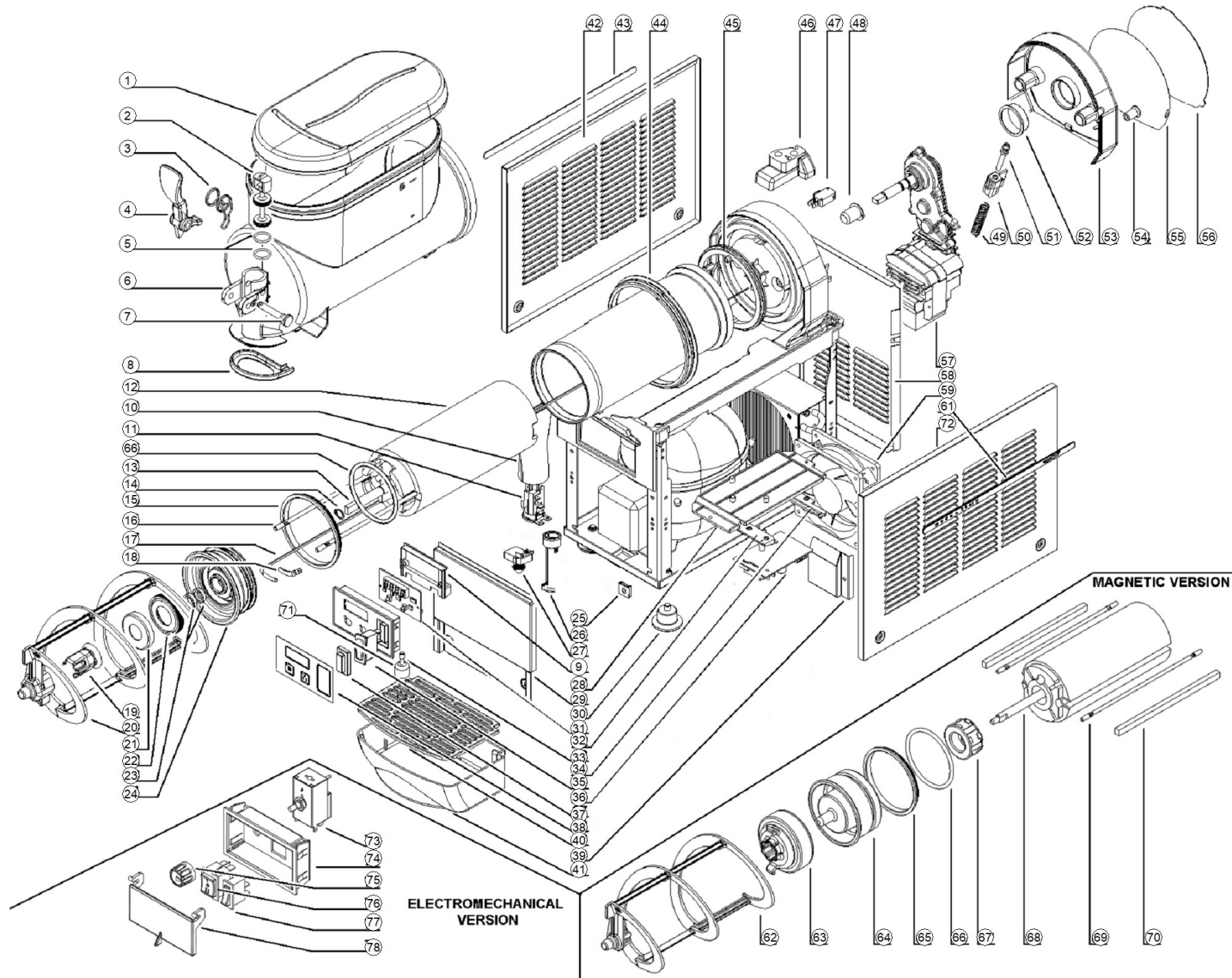


MICRO



MICRO

Pos.	Code	Description	Package quantity	Note
1	2T000-00100	COVER GREY	1	
1	2T000-00102	COVER FOR MICRO - B3	1	
2	22800-14802	FAUCET PISTON	3	
3	22800-15002	FAUCET HANDLE SPRING	3	
4	22700-01860-118	FAUCET HANDLE (WHITE)	3	
4	22700-01801	BLACK PUSH HANDLE	2	
5	22800-15100	FAUCET PISTON O-RING	10	
6	2T000-00001	TRASPARENT BOWL FOR B3	1	
7	22800-22161-118	FAUCET HANDLE PIN (WHITE)	10	
7	22800-22160	BLACK FAUCET HANDLE PIN	3	
8	2R000-04100	CONDENSATE COLLECTION SEAL	1	
9	22700-02870	DISPLAY CARD HOLDER COVER WHITE	2	
10	22800-12701	TERMINAL BLOCK PROTECTION	1	
11	22800-05500	TERMINAL BLOCK WITH CABLE CLAMP	3	
12	2Q000-06600	INSULATION FOR EVAPORATOR	1	
14	2Q000-07401	SPACER	1	
15	22700-00000	FRONT GASKET EVAPORATOR	2	
16	2T000-02600	EVAPORATOR SCREW STAY	1	
17	22700-02900	TEMPERATURE PROBE	2	
18	22700-01001	TEMPERATURE PROBE HOLDER	2	

MICRO

Pos.	Code	Description	Package quantity	Note
19	2Q000-01900	HEXAGONAL COUPLING FOR SHAFT	2	
20	2T000-02500	OUTER SPIRAL	1	
21	2Q000-06400	CAP FOR EVAPORATOR PLUG	1	
22	2Q000-06300	GASKET FOR EVAPORATOR PLUG CAP	1	
23	22800-22615	? 20 mm SEALING RING	5	
24	2Q000-02000	EVAPORATOR CAP	1	
25	10554-45001	M5 CLIP	20	
26	[[[COMPRESSOR MOTOR PROTECTOR	0	Order with the code shown on the piece
27	[[COMPRESSOR START RELAY	0	Order with the code shown on the piece
28	22800-14610	PWB SUPPORT	1	
30	22800-10000	RUBBER LEG	10	
31	22700-00640	DISPLAY CARD	1	
32	22800-14611	ADDITIONAL GUIDE FOR PRINTED CIRCUIT SUPPORT	1	
33	22700-02870	DISPLAY CARD HOLDER COVER WHITE	1	
33	22700-02801	DISPLAY CARD SUPPORT	1	
34	22800-14612	FIXED GUIDE FOR PRINTED CIRCUIT SUPPORT	1	
35	22800-24302	2-POSITION SWITCH	1	
36	22700-00610	ELECTRONIC DEVICE FOR ETC VERSION	1	
37	22800-24390	SWITCH CAP	10	
38	2T000-04200	KEYBOARD STICKERS WITH MAIN SWITCH	1	

MICRO

Pos.	Code	Description	Package quantity	Note
38	2T000-04300	KEYBOARD STICKERS	1	
39	2T000-04600	FAN MOTOR FLOW DIVERTER	1	
40	22900-03700-200	WHITE DRIP TRAY COVER	2	
40	22900-03701	BLACK DRIP TRAY COVER 10L	2	
41	2R000-02600-325	DRIP TRAY	2	
41	2T000-03000	DRIP TRAY	2	
42	3T000-03000	WHITE SIDE PANEL SX	1	
43	2T000-04410	STICKERS	1	
44	22800-17200	BOWL GASKET	5	
45	22700-00100	EVAPORATOR BACK GASKET	2	
46	10028-03222	MICROSWITCH PROTECTION	5	
47	22800-09301	MICROSWITCH	5	
48	22800-22401	GREY FRONT BUSHING FOR GEAR MOTOR	10	
49	10021-16802	DENSITY REGULATION SPRING BLUE	10	
50	22800-16961	SPRING HOLDER	5	
51	22800-16700	DENSITY ADJUSTMENT SCREW	5	
52	22800-22300	REAR COVER BUSHING FOR GEAR MOTOR	10	
53	22800-17562	REAR COVER FOR PHOTOGRAPH WHITE	1	
53	22800-17541	REAR COVER BLACK	1	
54	22800-22260	REAR COVER FIXING SCREW WHITE	6	

MICRO

Pos.	Code	Description	Package quantity	Note
55	2T000-04000	REAR COVER PICTURE	2	
56	10028-03703	REAR COVER PICTURE SCREEN FBM	5	
57	33700-00010	GEAR MOTOR 230V 50HZ 3-6LT	1	230V 50Hz
57	33700-00013	GEAR MOTOR 240V 50HZ	1	240V 50Hz
57	33700-00011	GEAR MOTOR 115V 60HZ	1	115V 60Hz
57	33700-00012	GEAR MOTOR MACHINE 220V 60HZ	1	220V 60Hz
59	22800-07600	FAN MOTOR WITH BRACKET 230V 50/60HZ	1	
61	2T000-04400	STICKERS	1	
63	3R000-00500	OUTSIDE MAGNETIC ROTOR ASSEMBLY	2	
64	22700-00500	ROTOR HOUSING FOR EVAPORATOR	1	
65	22700-00000	FRONT GASKET EVAPORATOR	2	
66	22700-02300	ROTOR HOUSING O-RING	2	
67	33800-09601	MAGNETIC INNER ROTOR BLACK	1	
68	22700-01100	SHAFT	1	
69	22700-00901	EVAPORATOR SCREW STAY	2	
70	22700-01301	EVAPORATOR INSIDE INSULATION PROFILE	1	
71	22900-06300	FLOAT FOR MAX LEVEL	5	
72	3T000-02000	WHITE SIDE PANEL DX	1	
73	21087-00001	THERMOSTAT WITH PIN	2	
74	22800-16564	WHITE SWITCH BOX	2	

MICRO

Pos.	Code	Description	Package quantity	Note
74	22800-16507	BLACK SWITCH BOX	2	
75	22800-14560	THERMOSTAT KNOB	5	
76	22800-24200	3-POSITIONS SWITCH	3	
77	22800-24302	2-POSITION SWITCH	1	
78	22800-16660	SWITCH PANEL COVER	2	
78	22800-16602	BLACK SWITCH PANEL COVER	2	