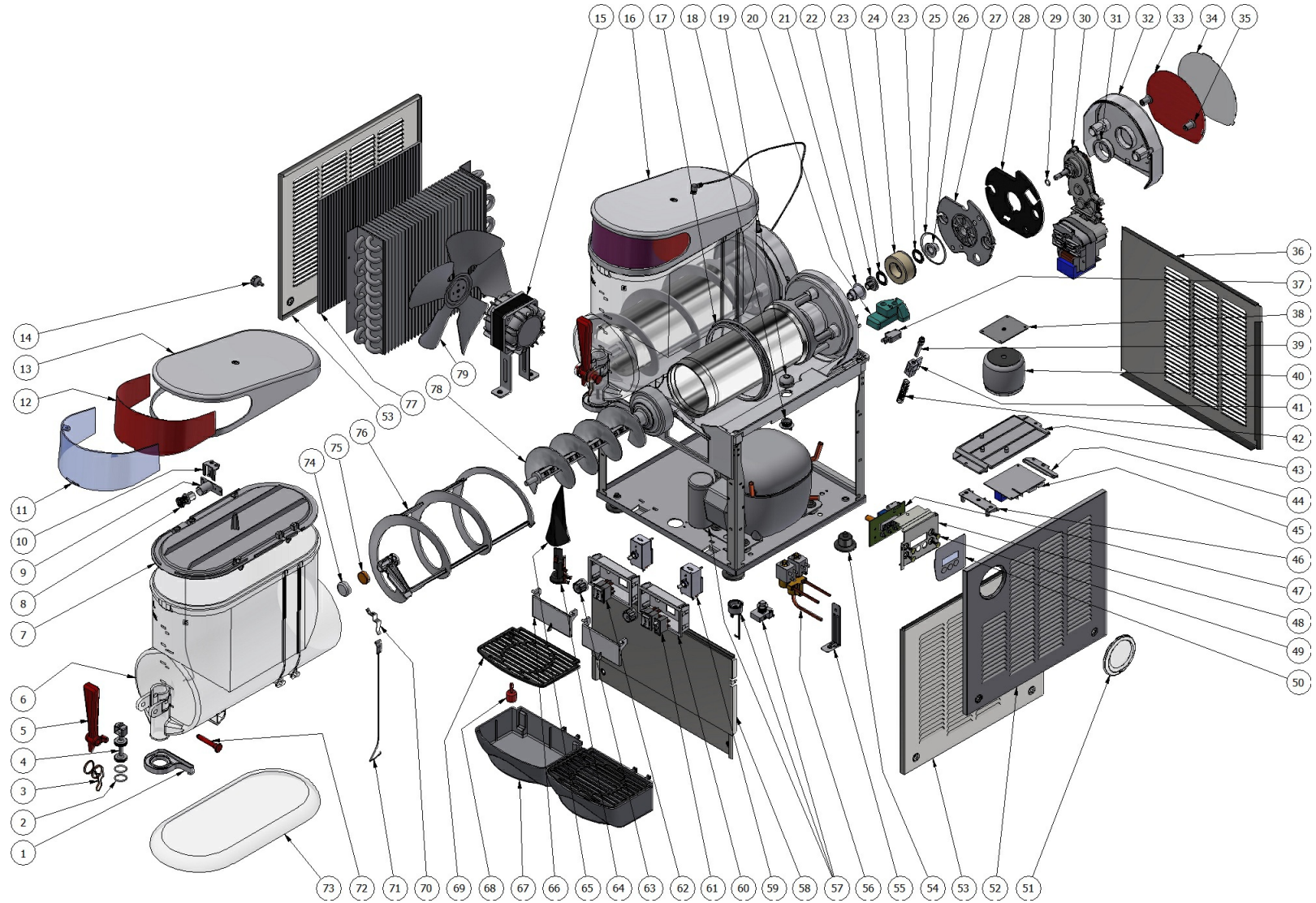


MT



MT

Pos.	Code	Description	Package quantity
79	21488-00000	? 240 mm FAN BLADE	1
78	33800-08001	COMPLETE AUGER BLACK	1
77	10028-00905	CONDENSER FILTER	5
76	22800-16102	OUTER SPIRAL FOR MAGNETIC SYSTEM - WHITE	2
75	22800-23501	THRUST WASHER	20
74	22800-23502	THRUST WASHER RUBBER CAP	20
73	22800-23400	TRANSPARENT COVER	1
72	22800-22100	RED FAUCET HANDLE PIN	3
72	22800-22160	BLACK FAUCET HANDLE PIN	3
72	22800-22161	FAUCET HANDLE PIN (GREEN)	3
71	22800-15202	COMPLETE TOP COVER LIGHT WIRE	6
70	22800-11700	TOP COVER LIGHT CONTACT BOWL 10 L	5
69	22800-00563	DRIP TRAY COVER	2
69	22800-00505	DRIP TRAY COVER BLK	2
69	22800-00503	DRIP TRAY COVER MT1 P, A12/19	2
69	22900-03700-200	WHITE DRIP TRAY COVER	2
69	22900-03701	BLACK DRIP TRAY COVER 10L	2
69	22800-00503	DRIP TRAY COVER MT1 P, A12/19	2
68	22900-06300	FLOAT FOR MAX LEVEL	5
67	22800-00663	DRIP TRAY	2

MT

Pos.	Code	Description	Package quantity
67	22800-00606	DRIP TRAY MT1 P, A12/19	2
67	22800-00605	DRIP TRAY MT1 P, A12/19	2
67	22900-03800-200	WHITE DRIP TRAY	2
67	22900-03801	BLACK DRIP TRAY 10L	2
67	22900-03800	NEW DRIP TRAY MT NHT	2
66	22800-16660	SWITCH PANEL COVER	2
66	22800-16602	BLACK SWITCH PANEL COVER	2
66	22800-16603	GREY SWITCH PANEL COVER	2
65	22800-12701	TERMINAL BLOCK PROTECTION	5
64	22800-05500	TERMINAL BLOCK WITH CABLE CLAMP	3
63	22800-14500	GREY THERMOSTAT KNOB	5
62	22800-24200	3-POSITIONS SWITCH	3
61	22800-24302	2-POSITION SWITCH	3
60	22800-16564	WHITE SWITCH BOX	2
60	22800-16507	BLACK SWITCH BOX	2
60	22800-16506	GREY SWITCH BOX	1
60	22800-16562	SWITCH BOX	2
60	22800-16505	BLACK SWITCH BOX	2
60	22800-16508	GREY SWITCH BOX	1
60	22800-16462	POWER SWITCH BOX UL VERSION	2

MT

Pos.	Code	Description	Package quantity
60	22800-16404	BLACK POWER SWITCH BOX	2
60	22800-16402	UL GREY POWER SWITCH BOX	2
59	21087-00001	THERMOSTAT WITH PIN	2
58	22800-41600	MT 1 DISPENSING PANEL	1
58	22800-41606	DISPENSING SIDE PANEL MINI 1 BLACK	1
58	22800-41607	MT 1 PLUS DISPENSING SIDE PANEL	1
58	22800-41608	MT 1 PLUS DISPENSING SIDE PANEL	1
58	22800-41700	FBM 2 FRONT PANEL	1
58	22800-41703	MT 2 BLACK DISPENSING SIDE PANEL	1
58	22800-41802	MT 3 DISPENSING SIDE PANEL	1
57	[[	COMPRESSOR START RELAY	0
57	[[[	COMPRESSOR MOTOR PROTECTOR	0
57	[[[[	COMPRESSOR CONDENSER	0
56	22800-23745	SOLENOID VALVE COIL 230-240V 50HZ OLAB	2
56	22800-23748	SOLENOID VALVE COIL 230/240V 50HZ CEME	2
56	22800-23746	SOLENOID VALVE COIL 115/60 OLAB	2
56	22800-23749	SOLENOID VALVE COIL 115/60	2
56	22800-23733	SOLENOID VALVE BODY 1WAY OLAB	1
56	22800-23734	SOLENOID VALVE BODY 1WAY CEME	1
56	22800-23735	2-WAYS VALVE BODY ?10mm OLAB	1

MT

Pos.	Code	Description	Package quantity
56	22800-23738	2-WAY VALVE BODY ?10mm CEME	1
56	22800-23736	3 WAY VALVE BODY ?10mm OLAB	1
56	22800-23739	3 WAY VALVE BODY ?10mm CEME	1
55	10028-01002	FIXING BRACKET A	1
54	22800-10000	RUBBER LEG	10
54	22800-04100	4" UL RUBBER LEG	4
53	22800-00300	SIDE PANEL RIGHT/LEFT INOX	1
52	22800-00205	RIGHT SIDE PANEL MT UL TIMER NEW	1
51	10028-02002	TIMER COVER	2
50	22700-11600	*****	1
49	10011-01203-007	KEYBOARD HOLDER	1
48	10028-01020	*****	1
47	2U000-12110	DEFROST TIMER	1
46	22800-14611	ADDITIONAL GUIDE FOR PRINTED CIRCUIT SUPPORT	1
45	22800-05251	DELAY ELECTRONIC DEVICE 1 BOWL "S" TYPE	1
44	22800-14612	FIXED GUIDE FOR PRINTED CIRCUIT SUPPORT	1
43	22800-14610	PWB SUPPORT	1
42	22800-16800	DENSITY REGULATION SPRING	10
41	22800-16961	SPRING HOLDER	5
40	22800-18241	TRANSFORMER 115V 50/60 HZ	1

MT

Pos.	Code	Description	Package quantity
40	22800-18240	TRANSFORMER 230V 50/60 HZ	1
39	22800-16700	DENSITY ADJUSTMENT SCREW	5
38	22800-22620	*****	1
37	22800-09301	MICROSWITCH	5
36	22800-46804	BACK PANEL MT 1 PLUS	1
36	22800-40002	MT/FBM 2 REAR PANEL	1
36	22800-46102	MT 3 BACK PANEL	1
36	22800-46105	BLACK BACK PANEL MT 3 UL	1
35	22800-22260	REAR COVER FIXING SCREW WHITE	6
35	22800-22201	BLACK REAR COVER FIXING SCREW	6
34	10028-03703	REAR COVER PICTURE SCREEN FBM	5
33	22800-29000	REAR COVER PICTURE	2
32	22800-17562	REAR COVER FOR PHOTOGRAPH WHITE	1
32	22800-17541	REAR COVER BLACK	1
32	22800-17540	LIGHT GREY REAR COVER	1
31	22800-22300	REAR COVER BUSHING FOR GEAR MOTOR	10
30	33800-04770	GEAR MOTOR FBM 230V 50HZ MAGNETIC SYSTEM	1
30	33800-04773	GEAR MOTOR 240V 50Hz MAGNETIC SYSTEM	1
30	33800-04774	GEAR MOTOR 115V 60Hz MAGNETIC SYSTEM	1
30	33800-04772	GEAR MOTOR 220V 60Hz MAGNETIC SYSTEM	1

MT

Pos.	Code	Description	Package quantity
29	10028-03217	CENTRAL SHAFT BLACK OR 8X2 mm (MAGNETIC S.)	20
28	10570-13602	FLANGE INSULATION FOAM	2
27	22800-15370	GEAR MOTOR FLANGE	1
26	10028-02800	FLANGE BUSHING FROZEN BEVERAGE DISPENSER	5
25	10028-02804	RED OR 3231 FOR GEAR MOTOR FLANGE	5
24	33800-09610	INNER ROTOR	2
23	10028-02805	INNER ROTOR WASHER	10
22	10028-02802	REAR BUSHING FOR FROZEN BEVERAGE DISPENSER	5
21	10028-02801	AUGER BUSHING FROZEN BEVERAGE DISPENSER	5
20	10028-03222	MICROSWITCH PROTECTION	5
19	22800-22805	FLEXIBLE CONTACT	6
18	22800-23000	10 L. BOWL FIXING RING	5
17	22800-17200	BOWL GASKET	5
16	KIT70-28050	CONNECTOR KIT WITH LIGH R290	1
15	21487-00000	MOTOR 16W. 220V. 50HZ	1
14	10028-03360	PANEL FIXING SCREW WITH KNOB WHITE	10
14	10028-03303	SIDE PANEL FIXING BLACK KNOB	10
14	10028-03307	MT SIDE PANEL FIXING GREY KNOB	10
13	22800-17020	GREY LIGHTED TOP COVER	1
13	22800-17002	BLACK LIGHTED TOP COVER (UPPER PART)	1

MT

Pos.	Code	Description	Package quantity
12	22800-28000	PICTURE FOR TOP COVER MT/HT	5
11	22800-16000	MT PICTURE SCREEN	3
10	10028-04201	BULB SOCKET BRACKET NEW TYPE	5
9	10028-04200	BULB SOCKET NEW TYPE	1
8	10028-03810	BULB 24V LED 5000/5500K	2
7	22800-17100	FROZEN DRINK DISPENSER LIGHTED TOP COVER (LOWER PART)	1
6	22800-17404	10 L. BOWL	1
5	22800-27400	FAUCET RED HANDLE FOR MT	3
5	22800-27401	FAUCET BLACK HANDLE FOR MT	5
5	22800-27400-069	FAUCET BLUE HANDLE FOR MT	3
5	22800-27401-424	FAUCET BLACK HANDLE FOR MT	5
4	22800-14802	FAUCET PISTON	3
3	22800-15002	FAUCET HANDLE SPRING	3
2	22800-15100	FAUCET PISTON O-RING	10
1	2R000-04110	CONDENSATE COLLECTION SEAL	1