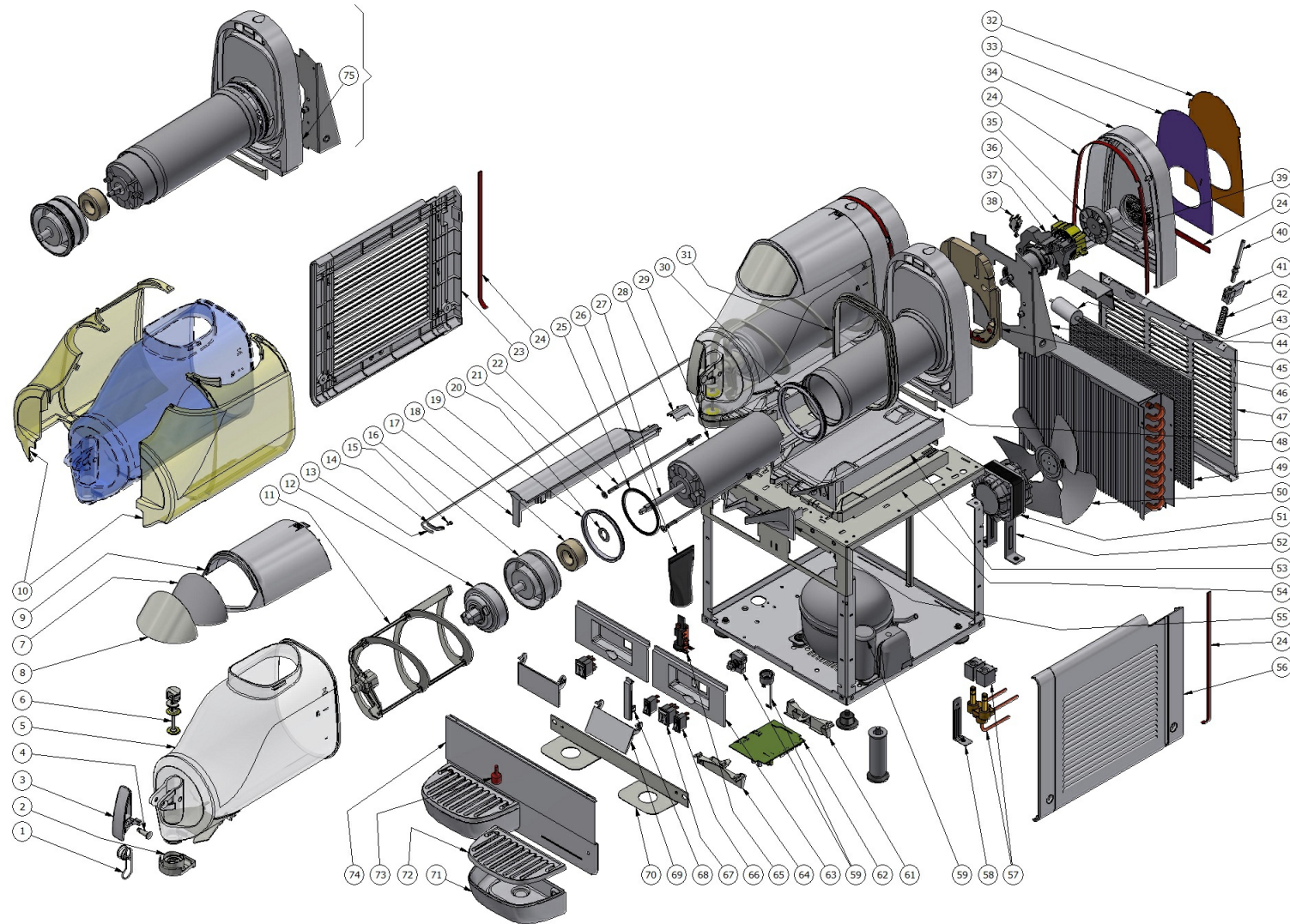


NG EASY - 6LT - gas R290



NG EASY - 6LT - gas R290

| Pos. | Code | Description | Package quantity |
|------|-------------|-------------------------------------|------------------|
| 75 | 3V000-00201 | EVAPORATOR ASSEMBLY GRANITORE NR 6 | 1 |
| 75 | 3V000-00200 | EVAPORATOR ASSEMBLY GRANITORE NR 6 | 1 |
| 74 | 2Q000-03281 | FRONT PANEL B-FROZEN 3 BLACK | 1 |
| 74 | 2Q000-03280 | DISPENSING SIDE PANEL | 1 |
| 74 | 2Q000-03271 | FRONT PANEL B FROZEN 2 BLACK | 1 |
| 74 | 2Q000-03270 | FRONT PANEL B CREAM 2 | 1 |
| 74 | 2Q000-03261 | FRONT PANEL B-FROZEN 1 BLACK | 1 |
| 74 | 2Q000-03260 | FRONT PANEL B-CREAM 1 | 1 |
| 74 | 2Q000-03220 | FRONT PANEL B-FROZEN 3 WHITE | 1 |
| 74 | 2Q000-03210 | FRONT PANEL B-FROZEN 2 WHITE | 1 |
| 74 | 2Q000-03200 | FRONT PANEL 6/10.1 WHITE | 1 |
| 73 | 22900-06300 | FLOAT FOR MAX LEVEL | 5 |
| 72 | 2Q000-01101 | DRIP TRAY COVER BLACK | 2 |
| 72 | 2Q000-01100 | DRIP TRAY COVER | 2 |
| 71 | 2Q000-01201 | DRIP TRAY BL | 1 |
| 71 | 2Q000-01200 | DRIP TRAY | 1 |
| 70 | 2Q000-05421 | BRACKET FOR DRIP TRAY SUPPORT BLACK | 1 |
| 70 | 2Q000-05411 | DRIP TRAY SUPPORT BL | 1 |
| 70 | 2Q000-05400 | DRIP TRAY SUPPORT | 1 |
| 69 | 2U000-10301 | BLACK SWITCH PANEL COVER | 1 |

NG EASY - 6LT - gas R290

| Pos. | Code | Description | Package quantity |
|------|-------------|--|------------------|
| 69 | 2U000-10300 | SWITCH PANEL COVER | 1 |
| 68 | 2U000-10401 | BLACK JUNCTION | 1 |
| 68 | 2U000-10400 | JUNCTION | 1 |
| 67 | 22800-24203 | 3-POSITIONS SWITCH | 3 |
| 66 | 22800-24302 | 2-POSITION SWITCH | 3 |
| 65 | 22800-05500 | TERMINAL BLOCK WITH CABLE CLAMP | 3 |
| 64 | 2Q000-03900 | RIGHT HOLDER FOR POWER BOARD | 1 |
| 63 | 2U000-09121 | BLACK SWITCH PANEL | 1 |
| 63 | 2U000-09120 | 2 SWITCH BOX (2 SWITCH) | 1 |
| 63 | 2U000-09111 | 1 BLACK SWITCH BOX (1 SWITCH) | 1 |
| 63 | 2U000-09110 | 1 SWITCH BOX (1 SWITCH) | 1 |
| 63 | 2U000-09101 | 3 BLACK SWITCH BOX (3 SWITCH) | 1 |
| 63 | 2U000-09100 | 3 SWITCH BOX (3 SWITCH) | 1 |
| 62 | 2U000-12340 | MASTER BOARD FOR R290 | 1 |
| 62 | 2U000-12330 | POWER BOARD FOR R290 NG EASY 2-3 BOWLS | 1 |
| 61 | 2Q000-03910 | LEFT HOLDER FOR POWER BOARD | 1 |
| 60 | 22800-10000 | RUBBER LEG | 10 |
| 60 | 22800-04100 | 4" UL RUBBER LEG | 4 |
| 59 | [[| COMPRESSOR START RELAY | 0 |
| 59 | [[[| COMPRESSOR MOTOR PROTECTOR | 0 |

NG EASY - 6LT - gas R290

| Pos. | Code | Description | Package quantity |
|------|-------------|--|------------------|
| 59 | [[[[| COMPRESSOR CONDENSER | 0 |
| 58 | 10028-01002 | FIXING BRACKET A | 1 |
| 57 | 22800-23749 | SOLENOID VALVE COIL 115/60 | 2 |
| 57 | 22800-23748 | SOLENOID VALVE COIL 230/240V 50HZ CEME | 2 |
| 57 | 22800-23746 | SOLENOID VALVE COIL 115/60 OLAB | 2 |
| 57 | 22800-23745 | SOLENOID VALVE COIL 230-240V 50HZ OLAB | 2 |
| 57 | 22800-23739 | 3 WAY VALVE BODY ?10mm CEME | 1 |
| 57 | 22800-23738 | 2-WAY VALVE BODY ?10mm CEME | 1 |
| 57 | 22800-23736 | 3 WAY VALVE BODY ?10mm OLAB | 1 |
| 57 | 22800-23735 | 2-WAYS VALVE BODY ?10mm OLAB | 1 |
| 57 | 22800-23734 | SOLENOID VALVE BODY 1WAY CEME | 1 |
| 57 | 22800-23733 | SOLENOID VALVE BODY 1WAY OLAB | 1 |
| 56 | 3U000-08001 | RIGHT SIDE PANEL NG 6/10 | 1 |
| 56 | 3U000-08000 | RIGHT SIDE PANEL NG 6/10 | 1 |
| 55 | 2Q000-00901 | BLACK COVER FOR DRAINING | 2 |
| 55 | 2Q000-00900 | COVER FOR DRAINING | 2 |
| 54 | 2Q000-06200 | INSULATION FOR UPPER DRIP TRAY | 1 |
| 53 | 2Q000-00402 | UPPER DRIP PLATE | 1 |
| 53 | 2Q000-00400 | UPPER DRIP PLATE | 1 |
| 52 | 21679-00000 | FAN MOTOR BRACKET | 1 |

NG EASY - 6LT - gas R290

| Pos. | Code | Description | Package quantity |
|------|-------------|---|------------------|
| 51 | 33800-00601 | FAN MOTOR 16W 115V 60HZ | 1 |
| 51 | 33800-00600 | FAN MOTOR 220-240V 50-60Hz 1P,2,3 BOWLS | 1 |
| 51 | 22800-07601 | MOTOR FOR FAN WITH BRACKET 115/60 HT20/1 | 1 |
| 51 | 22800-07600 | FAN MOTOR WITH BRACKET 230V 50/60HZ | 1 |
| 50 | 22800-13200 | ? 230 mm SPECIAL SUCTION FAN 60 HZ | 2 |
| 49 | 2Q000-07620 | CONDENSER FILTER 3 BOWLS | 1 |
| 49 | 2Q000-07610 | CONDENSER FILTER 2 BOWLS | 1 |
| 49 | 2Q000-07600 | CONDENSER FILTER 1 BOWL MACHINE | 1 |
| 48 | 2Q000-05800 | INSULATING BETWEEN EVAP.SUPPORT AND CONDENSATE COLLECTOR TRAY | 1 |
| 47 | 2U000-03801 | OPPOSITE FAUCET SIDE PANEL 3V | 1 |
| 47 | 2U000-03800 | OPPOSITE FAUCET SIDE PANEL 3V | 1 |
| 47 | 2U000-03701 | OPPOSITE FAUCET SIDE PANEL 1V | 1 |
| 47 | 2U000-03700 | OPPOSITE FAUCET SIDE PANEL 1V | 1 |
| 47 | 2Q000-03302 | OPPOSITE FAUCET SIDE PANEL 1V | 1 |
| 47 | 2Q000-03301 | OPPOSITE FAUCET SIDE PANEL 1V | 1 |
| 46 | 2Q000-06010 | REAR WALL INSULATION | 1 |
| 45 | 2U000-09800 | REAR WALL SUPPORT | 1 |
| 44 | 2U000-09991 | CAPACITOR 6 ?F | 1 |
| 44 | 2U000-09990 | CAPACITOR 1,5MF | 1 |
| 44 | 2U000-09990 | CAPACITOR 1,5MF | 1 |

NG EASY - 6LT - gas R290

| Pos. | Code | Description | Package quantity |
|------|-------------|-------------------------------------|------------------|
| 43 | 2U000-13200 | ***** | 1 |
| 42 | 2U000-13000 | DENSITY REGULATION SPRING | 1 |
| 41 | 2U000-09700 | SHAPED NUT | 1 |
| 40 | 2U000-10000 | DENSITY REGULATION SCREW B.FROZEN6 | 1 |
| 39 | 2U000-09010 | MOTOR SUPPORT BUSHING | 1 |
| 38 | 2U000-10110 | MICROSWITCH 6-10L R290 | 1 |
| 37 | 2U000-09000 | MOTOR SUPPORT | 1 |
| 36 | 3U000-09682 | INDUCTION MOTOR 220/60 | 1 |
| 36 | 3U000-09681 | INDUCTION MOTOR 115/60 SMART 6/10 L | 1 |
| 36 | 3U000-09680 | INDUCTION MOTOR 230V/50HZ 6/10 L | 1 |
| 35 | 2U000-09030 | FAN | 1 |
| 34 | 2U000-09301 | BLACK REAR COVER 6 LT | 1 |
| 34 | 2U000-09300 | REAR COVER 6 LT | 1 |
| 33 | 2V000-01000 | REAR COVER PICTURE | 1 |
| 32 | 2V000-01100 | REAR COVER PICTURE SCREEN | 10 |
| 31 | 2Q000-05100 | BOWL GASKET 6L | 5 |
| 30 | 22700-00100 | EVAPORATOR BACK GASKET | 2 |
| 29 | 2U000-02400 | EVAPORATOR INSULATING MATERIAL | 1 |
| 28 | 2Q000-08311 | BACK CAP BEAM | 1 |
| 28 | 2Q000-08310 | BACK CAP BEAM | 1 |

NG EASY - 6LT - gas R290

| Pos. | Code | Description | Package quantity |
|------|-------------|--|------------------|
| 27 | 2U000-00650 | EXTENSION FOR MOTOR SHAFT | 1 |
| 26 | 22800-12701 | TERMINAL BLOCK PROTECTION | 5 |
| 25 | 22700-02300 | ROTOR HOUSING O-RING | 2 |
| 24 | 3V000-04100 | STICKERS KIT | 1 |
| 24 | 3V000-04000 | STICKERS KIT | 1 |
| 23 | 3U000-07001 | LEFT SIDE PANEL | 1 |
| 23 | 3U000-07000 | LEFT SIDE PANEL | 1 |
| 22 | 2U000-00700 | BOLT FOR EVAP.FROZ.BEV.DISP FOR MGR 10/6 | 1 |
| 21 | 10522-26000 | PLAIN WASHER | 1 |
| 20 | 10028-02805 | INNER ROTOR WASHER | 10 |
| 19 | 22700-00000 | FRONT GASKET EVAPORATOR | 2 |
| 18 | 33800-09611 | INNER ROTOR | 1 |
| 17 | 2Q000-08301 | PLASTIC BEAM FOR CONNECTION BLACK | 1 |
| 17 | 2Q000-08300 | PLASTIC BEAM FOR CONNECTION | 1 |
| 16 | 22700-00500 | ROTOR HOUSING FOR EVAPORATOR | 1 |
| 15 | 10511-12909 | CROSS SCREW 2,9 x 9,5 | 1 |
| 14 | 22700-01001 | TEMPERATURE PROBE HOLDER | 2 |
| 13 | 22700-02900 | TEMPERATURE PROBE | 2 |
| 12 | 33700-00760 | COMPL.OUTER ROTOR FROZ.BEV.DISP.6 L | 2 |
| 11 | 2V000-00200 | MIXER | 2 |

NG EASY - 6LT - gas R290

| Pos. | Code | Description | Package quantity |
|------|-------------|----------------------------------|------------------|
| 10 | 2Q000-00782 | KIT ENERGY RECOVER | 1 |
| 9 | 2Q000-00804 | BLACK TOP COVER WITH MAGNET | 1 |
| 9 | 2Q000-00801 | TOP COVER WITH MAGNET | 1 |
| 8 | 2Q000-04000 | TRANSPARENT COVER FOR PICTURE 6L | 3 |
| 7 | 2V000-00500 | PICTURE FOR TOP COVER | 1 |
| 6 | 2Q000-01600 | FAUCET PISTON | 2 |
| 5 | 2Q000-00792 | BOWL 6 LT | 1 |
| 4 | 2Q000-05362 | GREEN PIN FOR FAUCET LEVER | 5 |
| 4 | 2Q000-05302 | RED PIN FOR FAUCET LEVER | 5 |
| 4 | 2Q000-05301 | BLACK PIN FOR FAUCET LEVER | 5 |
| 4 | 2Q000-05300 | WHITE PIN FOR FAUCET LEVER | 5 |
| 3 | 2Q000-01502 | FAUCET HANDLE | 2 |
| 3 | 2Q000-01501 | BLACK FAUCET HANDLE 6/10 L | 2 |
| 3 | 2Q000-01500 | FAUCET HANDLE MINIGEL | 2 |
| 2 | 2Q000-01001 | RESTRICTOR CAP BLACK 6L | 2 |
| 2 | 2Q000-01000 | RESTRICTOR CAP FOR MINIGEL | 2 |
| 1 | 2Q000-02100 | FAUCET SPRING | 2 |