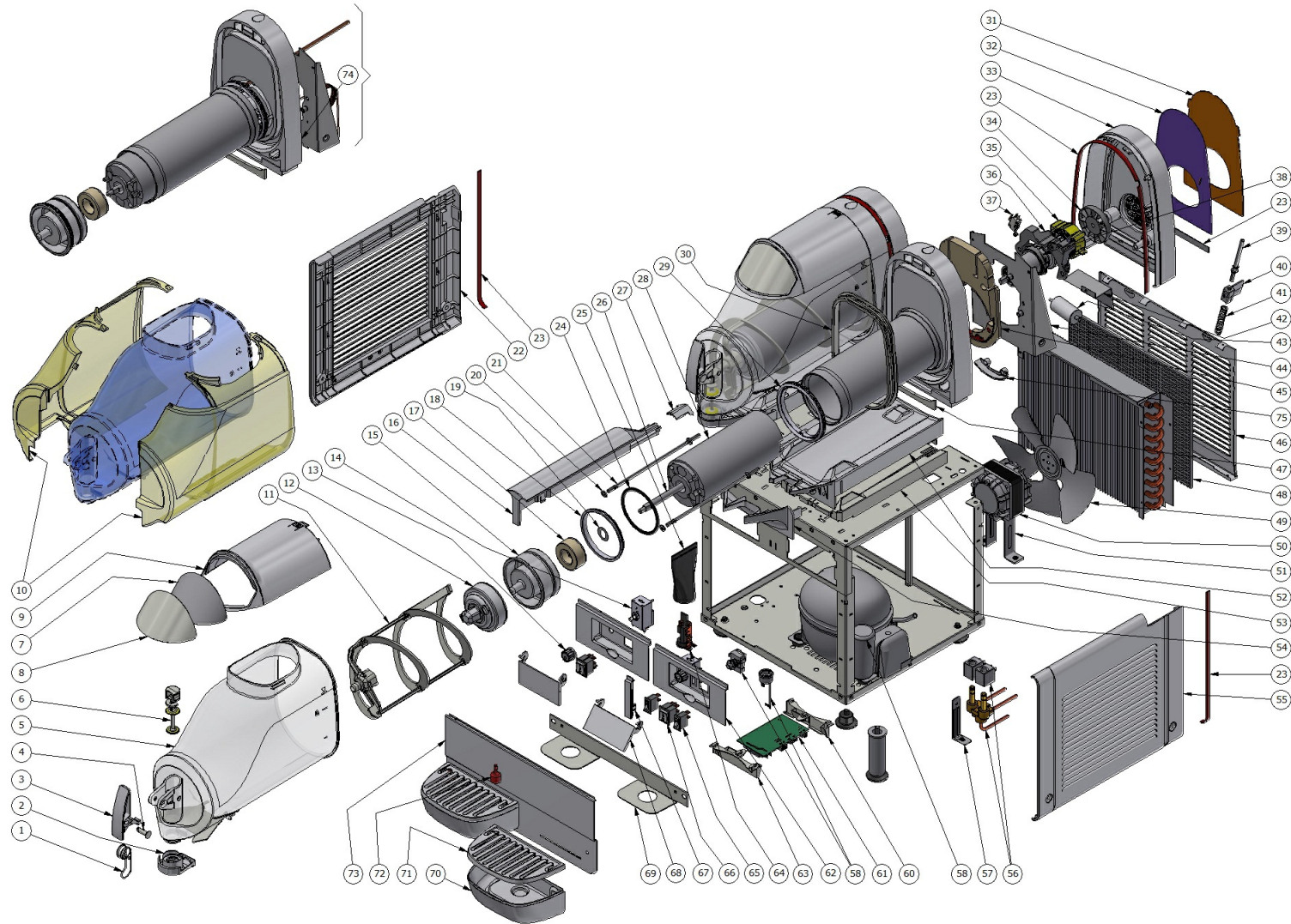


NG EASY - 6LT



**NG EASY - 6LT**

Pos.	Code	Description	Package quantity
75	2U000-05910	THERMOSTAT HOLDER	1
74	3V000-00201	EVAPORATOR ASSEMBLY GRANITORE NR 6	1
74	3V000-00200	EVAPORATOR ASSEMBLY GRANITORE NR 6	1
73	2Q000-03281	FRONT PANEL B-FROZEN 3 BLACK	1
73	2Q000-03280	DISPENSING SIDE PANEL	1
73	2Q000-03271	FRONT PANEL B FROZEN 2 BLACK	1
73	2Q000-03270	FRONT PANEL B CREAM 2	1
73	2Q000-03261	FRONT PANEL B-FROZEN 1 BLACK	1
73	2Q000-03260	FRONT PANEL B-CREAM 1	1
73	2Q000-03220	FRONT PANEL B-FROZEN 3 WHITE	1
73	2Q000-03210	FRONT PANEL B-FROZEN 2 WHITE	1
73	2Q000-03200	FRONT PANEL 6/10.1 WHITE	1
72	22900-06300	FLOAT FOR MAX LEVEL	5
71	2Q000-01101	DRIP TRAY COVER BLACK	2
71	2Q000-01100	DRIP TRAY COVER	2
70	2Q000-01201	DRIP TRAY BL	1
70	2Q000-01200	DRIP TRAY	1
69	2Q000-05421	BRACKET FOR DRIP TRAY SUPPORT BLACK	1
69	2Q000-05411	DRIP TRAY SUPPORT BL	1
69	2Q000-05400	DRIP TRAY SUPPORT	1

**NG EASY - 6LT**

Pos.	Code	Description	Package quantity
68	2U000-10301	BLACK SWITCH PANEL COVER	1
68	2U000-10300	SWITCH PANEL COVER	1
67	2U000-10401	BLACK JUNCTION	1
67	2U000-10400	JUNCTION	1
66	22800-24203	3-POSITIONS SWITCH	3
65	22800-24302	2-POSITION SWITCH	3
64	22800-05500	TERMINAL BLOCK WITH CABLE CLAMP	3
63	2U000-09500	POWER BOARD RIGHT SLIDE	1
62	2U000-09121	BLACK SWITCH PANEL	1
62	2U000-09120	2 SWITCH BOX (2 SWITCH)	1
62	2U000-09111	1 BLACK SWITCH BOX (1 SWITCH)	1
62	2U000-09110	1 SWITCH BOX (1 SWITCH)	1
62	2U000-09101	3 BLACK SWITCH BOX (3 SWITCH)	1
62	2U000-09100	3 SWITCH BOX (3 SWITCH)	1
61	22700-00600	DELAY ELECTRONIC DEVICE	1
61	2U000-12300	DELAY ELECTRONIC DEVICE B-FROZEN SMART 2/3 BOWLS	1
60	2U000-09501	POWER BOARD LEFT SLIDE	1
59	22800-10000	RUBBER LEG	10
59	22800-04100	4" UL RUBBER LEG	4
58	[[	COMPRESSOR START RELAY	0

**NG EASY - 6LT**

Pos.	Code	Description	Package quantity
58	[[[	COMPRESSOR MOTOR PROTECTOR	0
58	[[[[	COMPRESSOR CONDENSER	0
57	10028-01002	FIXING BRACKET A	1
56	22800-23749	SOLENOID VALVE COIL 115/60	2
56	22800-23748	SOLENOID VALVE COIL 230/240V 50HZ CEME	2
56	22800-23746	SOLENOID VALVE COIL 115/60 OLAB	2
56	22800-23745	SOLENOID VALVE COIL 230-240V 50HZ OLAB	2
56	22800-23739	3 WAY VALVE BODY ?10mm CEME	1
56	22800-23738	2-WAY VALVE BODY ?10mm CEME	1
56	22800-23736	3 WAY VALVE BODY ?10mm OLAB	1
56	22800-23735	2-WAYS VALVE BODY ?10mm OLAB	1
56	22800-23734	SOLENOID VALVE BODY 1WAY CEME	1
56	22800-23733	SOLENOID VALVE BODY 1WAY OLAB	1
55	3U000-08001	RIGHT SIDE PANEL NG 6/10	1
55	3U000-08000	RIGHT SIDE PANEL NG 6/10	1
54	2Q000-00901	BLACK COVER FOR DRAINING	2
54	2Q000-00900	COVER FOR DRAINING	2
53	2Q000-06200	INSULATION FOR UPPER DRIP TRAY	1
52	2Q000-00402	UPPER DRIP PLATE	1
52	2Q000-00400	UPPER DRIP PLATE	1

**NG EASY - 6LT**

Pos.	Code	Description	Package quantity
51	21679-00000	FAN MOTOR BRACKET	1
50	33800-00601	FAN MOTOR 16W 115V 60HZ	1
50	33800-00600	FAN MOTOR 220-240V 50-60Hz 1P,2,3 BOWLS	1
50	22800-07601	MOTOR FOR FAN WITH BRACKET 115/60 HT20/1	1
50	22800-07600	FAN MOTOR WITH BRACKET 230V 50/60HZ	1
49	22800-13200	? 230 mm SPECIAL SUCTION FAN 60 HZ	2
48	2Q000-07620	CONDENSER FILTER 3 BOWLS	1
48	2Q000-07610	CONDENSER FILTER 2 BOWLS	1
48	2Q000-07600	CONDENSER FILTER 1 BOWL MACHINE	1
47	2Q000-05800	INSULATING BETWEEN EVAP.SUPPORT AND CONDENSATE COLLECTOR TRAY	1
46	2U000-03801	OPPOSITE FAUCET SIDE PANEL 3V	1
46	2U000-03800	OPPOSITE FAUCET SIDE PANEL 3V	1
46	2U000-03701	OPPOSITE FAUCET SIDE PANEL 1V	1
46	2Q000-03700	EXTENSION FOR MOTOR SHAFT	1
46	2Q000-03302	OPPOSITE FAUCET SIDE PANEL 1V	1
46	2Q000-03301	OPPOSITE FAUCET SIDE PANEL 1V	1
45	2Q000-06010	REAR WALL INSULATION	1
44	2U000-09800	REAR WALL SUPPORT	1
43	2U000-09991	CAPACITOR 6 ?F	1
43	2U000-09990	CAPACITOR 1,5MF	1

**NG EASY - 6LT**

Pos.	Code	Description	Package quantity
43	2U000-09990	CAPACITOR 1,5MF	1
42	2U000-13200	*****	1
41	2U000-13000	DENSITY REGULATION SPRING	1
40	2U000-09700	SHAPED NUT	1
39	2U000-10000	DENSITY REGULATION SCREW B.FROZEN6	1
38	2U000-09010	MOTOR SUPPORT BUSHING	1
37	2U000-10110	MICROSWITCH 6-10L R290	1
36	2U000-09000	MOTOR SUPPORT	1
35	3U000-09682	INDUCTION MOTOR 220/60	1
35	3U000-09681	INDUCTION MOTOR 115/60 SMART 6/10 L	1
35	3U000-09680	INDUCTION MOTOR 230V/50HZ 6/10 L	1
34	2U000-09030	FAN	1
33	2U000-09301	BLACK REAR COVER 6 LT	1
33	2U000-09300	REAR COVER 6 LT	1
32	2V000-01000	REAR COVER PICTURE	1
31	2V000-01100	REAR COVER PICTURE SCREEN	10
30	2Q000-05100	BOWL GASKET 6L	5
29	22700-00100	EVAPORATOR BACK GASKET	2
28	2U000-02400	EVAPORATOR INSULATING MATERIAL	1
27	2Q000-08311	BACK CAP BEAM	1

**NG EASY - 6LT**

Pos.	Code	Description	Package quantity
27	2Q000-08310	BACK CAP BEAM	1
26	2U000-00650	EXTENSION FOR MOTOR SHAFT	1
25	22800-12701	TERMINAL BLOCK PROTECTION	5
24	22700-02300	ROTOR HOUSING O-RING	2
23	3V000-04100	STICKERS KIT	1
23	3V000-04000	STICKERS KIT	1
22	3U000-07001	LEFT SIDE PANEL	1
22	3U000-07000	LEFT SIDE PANEL	1
21	2U000-00700	BOLT FOR EVAP.FROZ.BEV.DISP FOR MGR 10/6	1
20	10522-26000	PLAIN WASHER	1
19	10028-02805	INNER ROTOR WASHER	10
18	22700-00000	FRONT GASKET EVAPORATOR	2
17	33800-09611	INNER ROTOR	1
16	2Q000-08301	PLASTIC BEAM FOR CONNECTION BLACK	1
16	2Q000-08300	PLASTIC BEAM FOR CONNECTION	1
15	22700-00500	ROTOR HOUSING FOR EVAPORATOR	1
14	21087-00011	THERMOSTAT FOR GRANITA MACHINE	2
13	22800-14500	GREY THERMOSTAT KNOB	5
12	33700-00760	COMPL.OUTER ROTOR FROZ.BEV.DISP.6 L	2
11	2V000-00200	MIXER	2

**NG EASY - 6LT**

Pos.	Code	Description	Package quantity
10	2Q000-00782	KIT ENERGY RECOVER	1
9	2Q000-00804	BLACK TOP COVER WITH MAGNET	1
9	2Q000-00801	TOP COVER WITH MAGNET	1
8	2Q000-04000	TRANSPARENT COVER FOR PICTURE 6L	3
7	2V000-00500	PICTURE FOR TOP COVER	1
6	2Q000-01600	FAUCET PISTON	2
5	2Q000-00792	BOWL 6 LT	1
4	2Q000-05362	GREEN PIN FOR FAUCET LEVER	5
4	2Q000-05302	RED PIN FOR FAUCET LEVER	5
4	2Q000-05301	BLACK PIN FOR FAUCET LEVER	5
4	2Q000-05300	WHITE PIN FOR FAUCET LEVER	5
3	2Q000-01502	FAUCET HANDLE	2
3	2Q000-01501	BLACK FAUCET HANDLE 6/10 L	2
3	2Q000-01500	FAUCET HANDLE MINIGEL	2
2	2Q000-01001	RESTRICTOR CAP BLACK 6L	2
2	2Q000-01000	RESTRICTOR CAP FOR MINIGEL	2
1	2Q000-02100	FAUCET SPRING	2