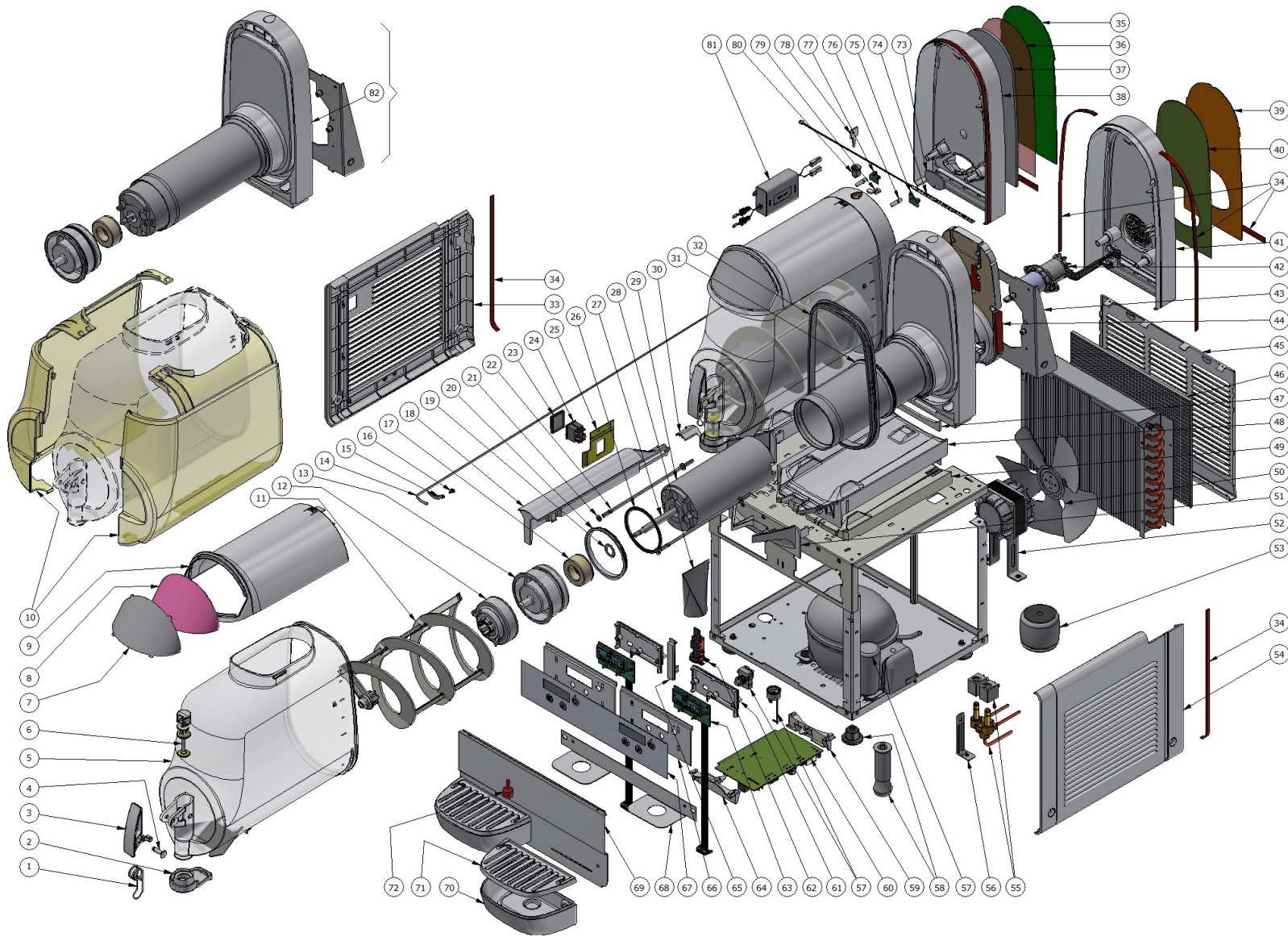


## NG ELECTRONIC - 10LT



**NG ELECTRONIC - 10LT**

Pos.	Code	Description	Package quantity
82	3U000-00100	EVAPORATOR ASSEMBLY GRANITORE MGR10	1
82	3U000-00102	EVAPORATOR ASSEMBLY GRANITORE MGR10	1
81	2Q000-04602	POWER SUPPLY 25W-12V	1
80	22805-02210	LOCK FOR TOP COVER	1
79	2Q000-05000	LEVER FOR LOCK	1
78	22805-02360	KEY	1
77	2U000-05610	LEFT LED BOARD	1
76	2Q000-08500	MAGNIFIER FOR LEDS	1
75	2U000-05600	RIGHT LED BOARD	1
74	2Q000-07100	LIGHTED STRIP FOR BACK COVER	1
73	2U000-05900	STOPPER	1
72	22900-06300	FLOAT FOR MAX LEVEL	5
71	2Q000-01100	DRIP TRAY COVER	2
71	2Q000-01101	DRIP TRAY COVER BLACK	2
70	2Q000-01200	DRIP TRAY	1
70	2Q000-01201	DRIP TRAY BL	1
69	2Q000-03200	FRONT PANEL 6/10.1 WHITE	1
69	2Q000-03261	FRONT PANEL B-FROZEN 1 BLACK	1
69	2Q000-03260	FRONT PANEL B-CREAM 1	1
69	2Q000-03210	FRONT PANEL B-FROZEN 2 WHITE	1

**NG ELECTRONIC - 10LT**

Pos.	Code	Description	Package quantity
69	2Q000-03271	FRONT PANEL B FROZEN 2 BLACK	1
69	2Q000-03270	FRONT PANEL B CREAM 2	1
69	2Q000-03220	FRONT PANEL B-FROZEN 3 WHITE	1
69	2Q000-03281	FRONT PANEL B-FROZEN 3 BLACK	1
69	2Q000-03280	DISPENSING SIDE PANEL	1
68	2Q000-05400	DRIP TRAY SUPPORT	1
68	2Q000-05411	DRIP TRAY SUPPORT BL	1
68	2Q000-05421	BRACKET FOR DRIP TRAY SUPPORT BLACK	1
67	2U000-02500	KEYBOARD STICKERS	1
67	2U000-02510	KEYBOARD STICKERS	1
67	2U000-02520	KEYBOARD STICKERS	1
67	2U000-02502	KEYBOARD STICKERS BLACK	1
67	2U000-02512	KEYBOARD STICKERS	1
67	2U000-02522	KEYBOARD STICKERS	1
67	2U000-02500-999	KEYBOARD STICKERS	1
67	2U000-02510-999	KEYBOARD STICKERS	1
67	2U000-02520-999	KEYBOARD STICKERS	1
67	2U000-02502-999	KEYBOARD STICKERS BLACK	1
67	2U000-02512-999	KEYBOARD STICKERS NG 6/10 2 BOWLS BLACK	1
67	2U000-02522-999	3 BOWLS KEYBOARD STICKERS 6/10L BL IN PLASTIC MATERIAL	1

**NG ELECTRONIC - 10LT**

Pos.	Code	Description	Package quantity
66	2U000-01500	SUPPORT DISPLY CARD	1
66	2U000-01502	SUPPORT DISPLY CARD	1
65	2U000-10400	JUNCTION	1
65	2U000-10401	BLACK JUNCTION	1
64	2Q000-03900	RIGHT HOLDER FOR POWER BOARD	1
63	2U000-01400	LCD DISPLAY CARD	1
62	22800-05500	TERMINAL BLOCK WITH CABLE CLAMP	3
61	2Q000-04501	COVER FOR DISPLAY CARD SUPPORT	1
61	2Q000-04502	COVER FOR DISPLAY CARD SUPPORT	1
60	2U000-02701	POWER BOARD 2 BOWLS FOR B-FROZEN 6/10 L	1
59	2Q000-03910	LEFT HOLDER FOR POWER BOARD	1
58	22800-10000	RUBBER LEG	10
58	22800-04100	4" UL RUBBER LEG	4
57	[[	COMPRESSOR START RELAY	0
57	[[[	COMPRESSOR MOTOR PROTECTOR	0
57	[[[[	COMPRESSOR CONDENSER	0
56	10028-01002	FIXING BRACKET A	1
55	22800-23745	SOLENOID VALVE COIL 230-240V 50HZ OLAB	2
55	22800-23748	SOLENOID VALVE COIL 230/240V 50HZ CEME	2
55	22800-23746	SOLENOID VALVE COIL 115/60 OLAB	2

**NG ELECTRONIC - 10LT**

Pos.	Code	Description	Package quantity
55	22800-23749	SOLENOID VALVE COIL 115/60	2
55	22800-23733	SOLENOID VALVE BODY 1WAY OLAB	1
55	22800-23734	SOLENOID VALVE BODY 1WAY CEME	1
55	22800-23735	2-WAYS VALVE BODY ?10mm OLAB	1
55	22800-23738	2-WAY VALVE BODY ?10mm CEME	1
55	22800-23736	3 WAY VALVE BODY ?10mm OLAB	1
55	22800-23739	3 WAY VALVE BODY ?10mm CEME	1
54	3U000-08000	RIGHT SIDE PANEL NG 6/10	1
54	3U000-08001	RIGHT SIDE PANEL NG 6/10	1
53	2U000-02900	TRANSFORMER TOROID 230/20V 60VA	1
53	2U000-02901	TRANSFORMER TOROID 115/20V 60VA	1
53	2U000-02910	TRANSFORMER TOROID 230/20V 120VA	1
53	2U000-02912	TRANSFORMER TOROID 115/20V 100VA UL	1
52	22800-07600	FAN MOTOR WITH BRACKET 230V 50/60HZ	1
52	22800-07601	MOTOR FOR FAN WITH BRACKET 115/60 HT20/1	1
52	33800-00600	FAN MOTOR 220-240V 50-60Hz 1P,2,3 BOWLS	1
52	33800-00600	FAN MOTOR 220-240V 50-60Hz 1P,2,3 BOWLS	1
52	33800-00600	FAN MOTOR 220-240V 50-60Hz 1P,2,3 BOWLS	1
52	33800-00601	FAN MOTOR 16W 115V 60HZ	1
51	2Q000-00900	COVER FOR DRAINING	2

**NG ELECTRONIC - 10LT**

Pos.	Code	Description	Package quantity
51	2Q000-00901	BLACK COVER FOR DRAINING	2
50	22800-13200	? 230 mm SPECIAL SUCTION FAN 60 HZ	2
49	2Q000-06200	INSULATION FOR UPPER DRIP TRAY	1
48	2Q000-00400	UPPER DRIP PLATE	1
48	2Q000-00402	UPPER DRIP PLATE	1
47	2Q000-05800	INSULATING BETWEEN EVAP.SUPPORT AND CONDENSATE COLLECTOR TRAY	1
46	2Q000-07600	CONDENSER FILTER 1 BOWL MACHINE	1
46	2Q000-07610	CONDENSER FILTER 2 BOWLS	1
46	2Q000-07620	CONDENSER FILTER 3 BOWLS	1
45	2Q000-03301	OPPOSITE FAUCET SIDE PANEL 1V	1
45	2Q000-03302	OPPOSITE FAUCET SIDE PANEL 1V	1
45	2Q000-03700	EXTENSION FOR MOTOR SHAFT	1
45	2U000-03701	OPPOSITE FAUCET SIDE PANEL 1V	1
45	2U000-03800	OPPOSITE FAUCET SIDE PANEL 3V	1
45	2U000-03801	OPPOSITE FAUCET SIDE PANEL 3V	1
44	2U000-05120	REAR WALL INSULATION NG/B-FROZEN 10	1
43	2U000-09820	*****	1
42	3U000-00091	GEARMOTOR 24V 6-10L DIGITAL MODEL	1
41	2U000-09400	RWAR COVER 10 LT	1
41	2U000-09401	BLACK REAR COVER 10 LT	1

**NG ELECTRONIC - 10LT**

Pos.	Code	Description	Package quantity
40	2U000-11000	10 LT REAR COVER PICTURE	1
39	2U000-11100	REAR COVER PICTURE SCREEN	10
38	2U000-00202	REAR COVER FOR NG 10	1
36	2U000-01900	REAR WALL COVER PICTURE	1
34	3U000-09000	STICKERS KIT	1
34	3U000-09100	STICKERS KIT	1
33	3U000-07000	LEFT SIDE PANEL	1
33	3U000-07001	LEFT SIDE PANEL	1
32	2U000-00500	BOWL GASKET 10L	5
31	22700-00100	EVAPORATOR BACK GASKET	2
30	2Q000-08310	BACK CAP BEAM	1
30	2Q000-08311	BACK CAP BEAM	1
29	2U000-02400	EVAPORATOR INSULATING MATERIAL	1
28	22800-12701	TERMINAL BLOCK PROTECTION	5
27	2U000-00650	EXTENSION FOR MOTOR SHAFT	1
26	22700-02300	ROTOR HOUSING O-RING	2
25	2W000-00500	SWITCH SUPPORT BRACKET	1
24	2W000-00801	2-POSITION SWITCH	1
23	2W000-00890	SWITCH CAP	1
22	2U000-00700	BOLT FOR EVAP.FROZ.BEV.DISP FOR MGR 10/6	1

**NG ELECTRONIC - 10LT**

Pos.	Code	Description	Package quantity
21	10522-26000	PLAIN WASHER	1
20	22700-00000	FRONT GASKET EVAPORATOR	2
19	10028-02805	INNER ROTOR WASHER	10
18	2Q000-08300	PLASTIC BEAM FOR CONNECTION	1
18	2Q000-08301	PLASTIC BEAM FOR CONNECTION BLACK	1
18	2Q000-08390	PLASTIC BEAM FOR CONNECTION	1
17	33800-09611	INNER ROTOR	1
16	10511-12909	CROSS SCREW 2,9 x 9,5	1
15	22700-01001	TEMPERATURE PROBE HOLDER	2
14	22700-02900	TEMPERATURE PROBE	2
13	22700-00500	ROTOR HOUSING FOR EVAPORATOR	1
12	3R000-00500	OUTSIDE MAGNETIC ROTOR ASSEMBLY	2
11	2U000-00910	MIXER	1
10	2U000-06002	KIT ENERGY RECOVER 10 LT	1
9	2U000-01000	COVER	1
9	2U000-01002	BLACK COVER	1
8	2U000-02010	TOP COVER PICTURE	3
7	2U000-02100	PICTURE SCREEN	3
6	2Q000-01600	FAUCET PISTON	2
5	2U000-00090	BOWL - NG 10L	1

**NG ELECTRONIC - 10LT**

Pos.	Code	Description	Package quantity
4	2Q000-05300	WHITE PIN FOR FAUCET LEVER	5
4	2Q000-05301	BLACK PIN FOR FAUCET LEVER	5
4	2Q000-05302	RED PIN FOR FAUCET LEVER	5
4	2Q000-05362	GREEN PIN FOR FAUCET LEVER	5
3	2Q000-01500	FAUCET HANDLE MINIGEL	2
3	2Q000-01501	BLACK FAUCET HANDLE 6/10 L	2
3	2Q000-01502	FAUCET HANDLE	2
3	2Q000-01500-503	FAUCET HANDLE MINIGEL	2
2	2U000-00800	RIGHT CONDENSATION COLLECTOR	1
2	2U000-00801	BLACK CONDENSATION COLLECTING RING FOR 10 LT	1
1	2Q000-02100	FAUCET SPRING	2