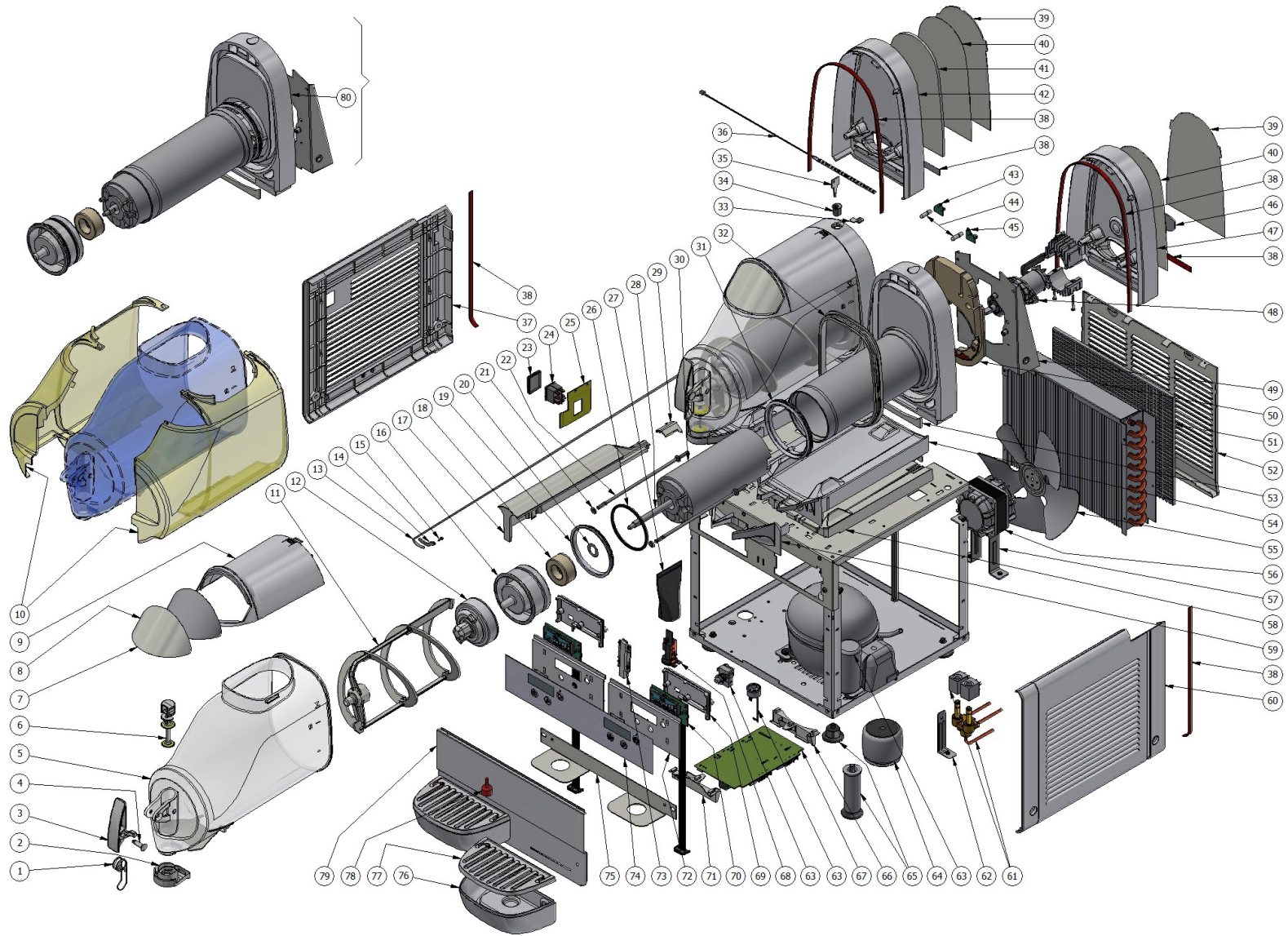


NG ELECTRONIC - 6LT



**NG ELECTRONIC - 6LT**

Pos.	Code	Description	Package quantity
80	3V000-00112	EVAPORATOR ASSEMBLY GRANITORE NR 6	1
80	3V000-00110	EVAPORATOR ASSEMBLY GRANITORE NR 6	1
80	3V000-00102	EVAPORATOR ASSEMBLY GRANITORE NR 6	1
80	3V000-00100	EVAPORATOR ASSEMBLY GRANITORE NR 6	1
79	2Q000-03281	FRONT PANEL B-FROZEN 3 BLACK	1
79	2Q000-03280	DISPENSING SIDE PANEL	1
79	2Q000-03271	FRONT PANEL B FROZEN 2 BLACK	1
79	2Q000-03270	FRONT PANEL B CREAM 2	1
79	2Q000-03261	FRONT PANEL B-FROZEN 1 BLACK	1
79	2Q000-03260	FRONT PANEL B-CREAM 1	1
79	2Q000-03220	FRONT PANEL B-FROZEN 3 WHITE	1
79	2Q000-03210	FRONT PANEL B-FROZEN 2 WHITE	1
79	2Q000-03200	FRONT PANEL 6/10.1 WHITE	1
78	22900-06300	FLOAT FOR MAX LEVEL	5
77	2Q000-01101	DRIP TRAY COVER BLACK	2
77	2Q000-01100	DRIP TRAY COVER	2
76	2Q000-01201	DRIP TRAY BL	1
76	2Q000-01200	DRIP TRAY	1
75	2Q000-05421	BRACKET FOR DRIP TRAY SUPPORT BLACK	1
75	2Q000-05411	DRIP TRAY SUPPORT BL	1

**NG ELECTRONIC - 6LT**

Pos.	Code	Description	Package quantity
75	2Q000-05400	DRIP TRAY SUPPORT	1
74	2U000-02522-999	3 BOWLS KEYBOARD STICKERS 6/10L BL IN PLASTIC MATERIAL	1
74	2U000-02522	KEYBOARD STICKERS	1
74	2U000-02520-999	KEYBOARD STICKERS	1
74	2U000-02520	KEYBOARD STICKERS	1
74	2U000-02512-999	KEYBOARD STICKERS NG 6/10 2 BOWLS BLACK	1
74	2U000-02512	KEYBOARD STICKERS	1
74	2U000-02510-999	KEYBOARD STICKERS	1
74	2U000-02510	KEYBOARD STICKERS	1
74	2U000-02502-999	KEYBOARD STICKERS BLACK	1
74	2U000-02502	KEYBOARD STICKERS BLACK	1
74	2U000-02500-999	KEYBOARD STICKERS	1
74	2U000-02500	KEYBOARD STICKERS	1
73	2Q000-01311	CONNECTING PLATE FOR DISPLAY BOARD SUPPORT	1
73	2Q000-01310	CONNECTING PLATE FOR DISPLAY BOARD SUPPORT	1
72	2U000-01502	SUPPORT DISPLY CARD	1
72	2U000-01500	SUPPORT DISPLY CARD	1
71	2Q000-03900	RIGHT HOLDER FOR POWER BOARD	1
70	2U000-01400	LCD DISPLAY CARD	1
69	2Q000-04502	COVER FOR DISPLAY CARD SUPPORT	1

**NG ELECTRONIC - 6LT**

Pos.	Code	Description	Package quantity
69	2Q000-04501	COVER FOR DISPLAY CARD SUPPORT	1
68	22800-05501	TERMINAL BLOCK WITH CABLE CLAMP	1
67	2U000-02701	POWER BOARD 2 BOWLS FOR B-FROZEN 6/10 L	1
67	2U000-02601	POWER BOARD 1-3 BOWLS FOR B.FROZEN 6/10 L	1
66	2Q000-03910	LEFT HOLDER FOR POWER BOARD	1
65	22800-10000	RUBBER LEG	10
65	22800-04100	4" UL RUBBER LEG	4
64	2U000-02912	TRANSFORMER TOROID 115/20V 100VA UL	1
64	2U000-02910	TRANSFORMER TOROID 230/20V 120VA	1
64	2U000-02901	TRANSFORMER TOROID 115/20V 60VA	1
64	2U000-02900	TRANSFORMER TOROID 230/20V 60VA	1
63	[[	COMPRESSOR START RELAY	0
63	[[[	COMPRESSOR MOTOR PROTECTOR	0
63	[[[[	COMPRESSOR CONDENSER	0
62	10028-01002	FIXING BRACKET A	1
61	22800-23749	SOLENOID VALVE COIL 115/60	2
61	22800-23748	SOLENOID VALVE COIL 230/240V 50HZ CEME	2
61	22800-23746	SOLENOID VALVE COIL 115/60 OLAB	2
61	22800-23745	SOLENOID VALVE COIL 230-240V 50HZ OLAB	2
61	22800-23739	3 WAY VALVE BODY ?10mm CEME	1

**NG ELECTRONIC - 6LT**

Pos.	Code	Description	Package quantity
61	22800-23738	2-WAY VALVE BODY ?10mm CEME	1
61	22800-23736	3 WAY VALVE BODY ?10mm OLAB	1
61	22800-23735	2-WAYS VALVE BODY ?10mm OLAB	1
61	22800-23734	SOLENOID VALVE BODY 1WAY CEME	1
61	22800-23733	SOLENOID VALVE BODY 1WAY OLAB	1
60	3U000-08001	RIGHT SIDE PANEL NG 6/10	1
60	3U000-08000	RIGHT SIDE PANEL NG 6/10	1
59	2Q000-00901	BLACK COVER FOR DRAINING	2
59	2Q000-00900	COVER FOR DRAINING	2
58	2Q000-06200	INSULATION FOR UPPER DRIP TRAY	1
57	21679-00000	FAN MOTOR BRACKET	1
56	33800-00601	FAN MOTOR 16W 115V 60HZ	1
56	33800-00600	FAN MOTOR 220-240V 50-60Hz 1P,2,3 BOWLS	1
56	22800-07601	MOTOR FOR FAN WITH BRACKET 115/60 HT20/1	1
56	22800-07600	FAN MOTOR WITH BRACKET 230V 50/60HZ	1
55	22800-13200	? 230 mm SPECIAL SUCTION FAN 60 HZ	2
54	2Q000-00402	UPPER DRIP PLATE	1
54	2Q000-00400	UPPER DRIP PLATE	1
53	2Q000-05800	INSULATING BETWEEN EVAP.SUPPORT AND CONDENSATE COLLECTOR TRAY	1
52	2U000-03801	OPPOSITE FAUCET SIDE PANEL 3V	1

**NG ELECTRONIC - 6LT**

Pos.	Code	Description	Package quantity
52	2U000-03800	OPPOSITE FAUCET SIDE PANEL 3V	1
52	2U000-03701	OPPOSITE FAUCET SIDE PANEL 1V	1
52	2U000-03700	OPPOSITE FAUCET SIDE PANEL 1V	1
52	2Q000-03302	OPPOSITE FAUCET SIDE PANEL 1V	1
52	2Q000-03301	OPPOSITE FAUCET SIDE PANEL 1V	1
51	2Q000-07620	CONDENSER FILTER 3 BOWLS	1
51	2Q000-07610	CONDENSER FILTER 2 BOWLS	1
51	2Q000-07600	CONDENSER FILTER 1 BOWL MACHINE	1
50	2Q000-06010	REAR WALL INSULATION	1
49	2U000-09800	REAR WALL SUPPORT	1
48	3U000-00091	GEARMOTOR 24V 6-10L DIGITAL MODEL	1
47	2Q000-01802	REAR COVER	1
47	2Q000-01800	REAR COVER	1
46	2U000-05900	STOPPER	1
45	2U000-05620	RIGHT LED BOARD	1
44	2Q000-08500	MAGNIFIER FOR LEDS	1
43	2U000-05630	LEFT LED BOARD	1
42	2Q000-01812	LIGHT REAR COVER	1
42	2Q000-01810	LIGHT REAR COVER	1
41	2Q000-07000	LIGHTED BACK SCREEN	1

**NG ELECTRONIC - 6LT**

Pos.	Code	Description	Package quantity
40	2V000-00400	REAR COVER PICTURE	1
39	2Q000-04200	REAR COVER PICTURE SCREEN	10
38	3V000-04100	STICKERS KIT	1
38	3V000-04000	STICKERS KIT	1
37	3U001-07031	LEFT SIDE PANEL	1
37	3U001-07030	LEFT SIDE PANEL	1
36	2Q000-07100	LIGHTED STRIP FOR BACK COVER	1
35	22805-02360	KEY	1
34	22805-02210	LOCK FOR TOP COVER	1
33	2Q000-05000	LEVER FOR LOCK	1
32	2Q000-05100	BOWL GASKET 6L	5
31	22700-00100	EVAPORATOR BACK GASKET	2
30	2U000-02400	EVAPORATOR INSULATING MATERIAL	1
29	2Q000-08311	BACK CAP BEAM	1
29	2Q000-08310	BACK CAP BEAM	1
28	2U000-00650	EXTENSION FOR MOTOR SHAFT	1
27	22800-12701	TERMINAL BLOCK PROTECTION	5
26	22700-02300	ROTOR HOUSING O-RING	2
25	2U000-06210	FIXING BRACKET	1
24	2W000-00801	2-POSITION SWITCH	1

**NG ELECTRONIC - 6LT**

Pos.	Code	Description	Package quantity
23	2W000-00890	SWITCH CAP	1
22	2U000-00700	BOLT FOR EVAP.FROZ.BEV.DISP FOR MGR 10/6	1
21	10522-26000	PLAIN WASHER	1
20	10028-02805	INNER ROTOR WASHER	10
19	22700-00000	FRONT GASKET EVAPORATOR	2
18	33800-09611	INNER ROTOR	1
17	2Q000-08301	PLASTIC BEAM FOR CONNECTION BLACK	1
17	2Q000-08300	PLASTIC BEAM FOR CONNECTION	1
16	22700-00500	ROTOR HOUSING FOR EVAPORATOR	1
15	10511-12909	CROSS SCREW 2,9 x 9,5	1
14	22700-01001	TEMPERATURE PROBE HOLDER	2
13	22700-02900	TEMPERATURE PROBE	2
12	33700-00760	COMPL.OUTER ROTOR FROZ.BEV.DISP.6 L	2
11	2V000-00200	MIXER	2
10	2Q000-00782	KIT ENERGY RECOVER	1
9	2Q000-00810	TOP LIGHT COVER	1
9	2Q000-00804	BLACK TOP COVER WITH MAGNET	1
9	2Q000-00801	TOP COVER WITH MAGNET	1
8	2V000-00500	PICTURE FOR TOP COVER	1
7	2Q000-04000	TRANSPARENT COVER FOR PICTURE 6L	3

**NG ELECTRONIC - 6LT**

Pos.	Code	Description	Package quantity
6	2Q000-01600	FAUCET PISTON	2
5	2Q000-00792	BOWL 6 LT	1
4	2Q000-05362	GREEN PIN FOR FAUCET LEVER	5
4	2Q000-05302	RED PIN FOR FAUCET LEVER	5
4	2Q000-05301	BLACK PIN FOR FAUCET LEVER	5
4	2Q000-05300	WHITE PIN FOR FAUCET LEVER	5
3	2Q000-01502	FAUCET HANDLE	2
3	2Q000-01501	BLACK FAUCET HANDLE 6/10 L	2
3	2Q000-01500	FAUCET HANDLE MINIGEL	2
2	2Q000-01001	RESTRICTOR CAP BLACK 6L	2
2	2Q000-01000	RESTRICTOR CAP FOR MINIGEL	2
1	2Q000-02100	FAUCET SPRING	2