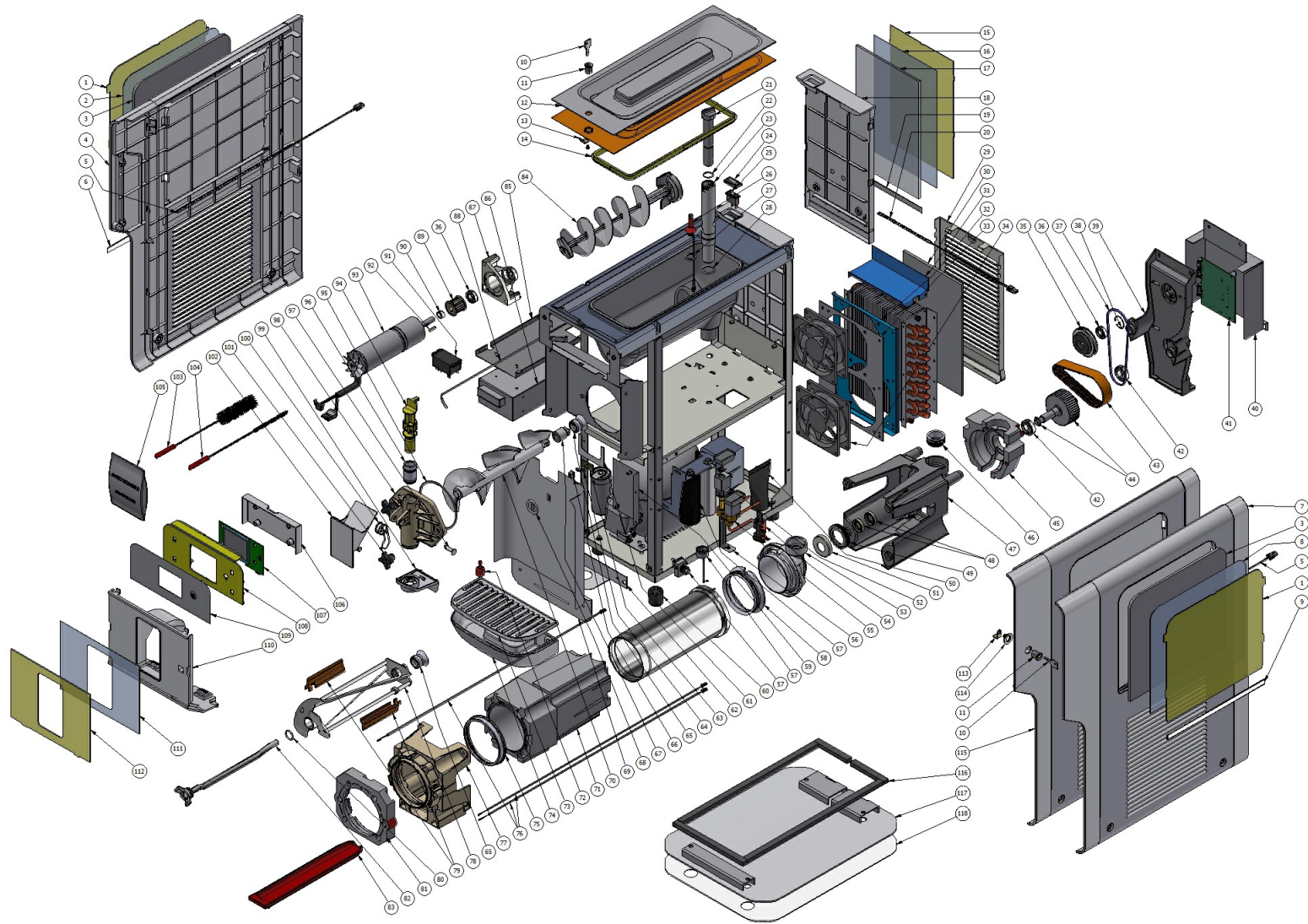


QuickGEL



QuickGEL

Pos.	Code	Description	Package quantity
118	2S000-20200	LOWER STRIP FOR BASE	1
117	2S000-20000	BASE	1
116	2S000-20100	SEAL KIT FOR BASE	1
115	2S000-02601	*****	1
115	2S000-02603	*****	1
114	2S000-07720	REINFORCING PLACE	1
113	2S000-07710	LOCK HANDLE	1
112	2S000-01700	TRANSPARENT FRONT COVER	1
111	2S000-12000	FRONT IMAGE	2
110	2S000-01400	PANEL FOR FRONT IMAGE	1
110	2S000-01402	PANEL FOR FRONT IMAGE	1
109	2S000-02900-999	KEYBOARD STICKER NEUTRAL	1
109	2S000-02901-999	KEYBOARD STICKER BLACK	1
108	2S000-01600	DISPLAY BOARD SUPPORT	1
108	2S000-01602	DISPLAY BOARD SUPPORT	1
107	2S000-06000	DISPLAY CARD	1
106	2S000-01500	DISPLAY BOARD REAR COVER	1
105	2S000-20420	SANITIZER PRODUCT	1
104	2S000-20401	PIPE CLEANER DIAM. 8	1
103	2S000-20400	PIPE CLEANER DIAM. 30	1

QuickGEL

Pos.	Code	Description	Package quantity
102	2S000-01900	TAP LEVER	1
101	2S000-09000	LOBE FLYWHEEL	1
100	2Q000-02100	FAUCET SPRING	2
99	2S000-01800	FLOW LIMITER	1
99	2S000-01802	FLOW LIMITER	1
98	2S000-02000	TAP	1
97	2Q000-05300	WHITE PIN FOR FAUCET LEVER	5
97	2Q000-05301	BLACK PIN FOR FAUCET LEVER	5
96	2S000-02110	TAP PISTON SEAL	1
95	2S000-09200	TAP BODY OR SEAL IS CREAM	3
94	3S000-11100	TAP PISTON	1
93	3S000-00000	GEARMOTOR QUICK GEL - IS-CREAM	1
92	2S000-11110	GEARMOTOR SHAFT TAB	1
91	10028-04403	RELAY 24V DC 25A	1
90	2S000-07500	MOTOR PULLEY SPACER	1
89	2S000-07100	SMALLER PULLEY	1
88	22700-02900	TEMPERATURE PROBE	2
87	2S000-05300	MOTOR SUPPORT	1
86	2S000-09400	BALLAST 36V DC 600W	1
85	2S000-07600	BALLAST FASTENING BRACKET	1

QuickGEL

Pos.	Code	Description	Package quantity
84	3S000-12420	MIXER ASSEMBLY FOR HOPPER	1
83	2S000-03600	IMPURITIES COLLECTOR TRAY	1
82	2S000-17801	FIXED PART SCAPER	1
81	2S000-03510	FRONT INSULATION	1
80	22800-15100	FAUCET PISTON O-RING	10
79	2S000-17800	FIN FOR SCRAPER	1
78	3S000-12600	STEEL SCRAPER	1
77	2S000-03000	FRONT SUPPORT	1
76	2Q000-03500	REED PROXIMITY SENSOR	1
75	2S000-04100	FRONT EVAPORATOR SEAL	1
74	2S000-01200	DRIP TRAY	1
74	2S000-01202	DRIP TRAY BLACK	1
73	2S000-01300	DRIP TRAY COVER	1
73	2S000-01302	DRIP TRAY COVER	1
72	22900-06300	FLOAT FOR MAX LEVEL	5
71	2S000-03400	EVAPORATOR INSULATION	1
70	2S000-03700	SCRAPER	1
69	2S000-00400	TAP SIDE PANEL	1
69	2S000-00410	TAP SIDE PANEL	1
69	2S000-00412	TAP SIDE PANEL	1

QuickGEL

Pos.	Code	Description	Package quantity
68	2S000-20610	ADHESIVE	1
68	2S000-20611	ADHESIVE	1
67	2S000-05100	SCRAPER COUPLING	1
66	2Q000-01390	CUP SENSOR HOLDER	1
65	2S000-04400	SCRAPER SEAL	5
64	2S000-20600	WASHER	1
63	2S000-20620	SENSOR BOARD PRESENCE GLASS	1
62	2S000-00502	TRAY SUPPORT BRACKET	1
61	2S000-08400	GASKET FOR IMPURITIES TRAY	1
60	22800-10000	RUBBER LEG	10
59	2S000-09900	SUPPORT BRACKET	1
58	2S000-04200	REAR EVAPORATOR SEAL	1
57	[[COMPRESSOR START RELAY	0
57	[[[COMPRESSOR MOTOR PROTECTOR	0
57	[[[[COMPRESSOR CONDENSER	0
56	10028-01002	FIXING BRACKET A	1
55	22800-23738	2-WAY VALVE BODY ?10mm CEME	1
54	22800-05500	TERMINAL BLOCK WITH CABLE CLAMP	3
53	2S000-03200	INTERNAL REAR SUPPORT	1
52	2S000-09600	SOLENOID VALVE COIL	2

QuickGEL

Pos.	Code	Description	Package quantity
51	2Q000-06400	CAP FOR EVAPORATOR PLUG	1
50	22800-12701	TERMINAL BLOCK PROTECTION	5
49	2S000-04500	EVAPORATOR PLUG CAP SEAL	1
48	2S000-11010	PULLEY SHAFT SEALING RING	1
47	2S000-03100	EXTERNAL REAR SUPPORT	1
46	2S000-04300	EVAPORATOR INLET SEAL	1
45	2S000-03500	REAR INSULATION	1
44	3S000-12100	BIGGER PULLEY ASSEMBLY	1
43	2S000-07000	BELT	1
42	2S000-10001	PULLEY SHAFT BEARING	1
41	2S000-06110	POWER BOARD	1
40	2S000-17100	PROTECTION FOR POWER BOARD	1
39	2S000-03300	PULLEY SUPPORT	1
38	2S000-11001	INTERNAL RING DIA.28MM DIN 472	1
37	2S000-05011	BELT FOR MIXER	1
36	22800-22613	? 28 mm BALL BEARING	5
35	3S000-12301	PULLEY ? 60	1
34	2S000-09510	24V FAN MOTOR	1
33	2S000-00840	SHOCK ABSORBING SPONGE	1
32	2S000-00830	LOWER PART CONVEYOR	1

QuickGEL

Pos.	Code	Description	Package quantity
31	2S000-00820	UPPER PART CONVEYOR	1
30	2S000-11200	CONDENSER FILTER	5
29	2S000-00600	TAP OPPOSITE SIDE PANEL	1
29	2S000-00601	TAP OPPOSITE SIDE PANEL	1
29	2S000-00602	TAP OPPOSITE SIDE PANEL	1
29	2S000-00603	TAP OPPOSITE SIDE PANEL	1
28	2S000-09210	LOWER SUPPLY PIPE OR SEAL	3
27	2S000-16500	ROD SEAL FOR FLOATING	5
26	3S000-05010	LEVEL SENSOR	1
25	22800-24302	2-POSITION SWITCH	3
24	22800-24390	SWITCH CAP	10
23	2S000-03901	LOWER SUPPLY PIPE PART	1
22	2S000-09211	UPPER SUPPLY PIPE OR SEAL	3
21	2S000-03801	UPPER SUPPLY PIPE PART	1
20	2S000-07310	REAR PANEL LED STRIP	1
19	2S000-07800	REAR SIDE STICKER	1
18	2S000-02200	BACK PANEL	1
18	2S000-02202	*****	1
17	2S000-02400	REAR LIGHTED SCREEN	1
17	2S000-02880	SPACER SCREEN (NOT BACKLIT VERSION)	1

QuickGEL

Pos.	Code	Description	Package quantity
16	2S000-14100	LIGHTED REAR IMAGE	2
15	2S000-02300	TRANSPARENT REAR COVER	1
14	2S000-04000	COVER SEAL	1
13	2S000-07700	LOCK HANDLE	1
12	2S000-01001	COVER WITH LOCK	1
12	2S000-01011	COVER	1
12	2S000-01002	COVER WITH LOCK	1
12	2S000-01012	BLACK COVER	1
11	22805-02210	LOCK FOR TOP COVER	1
10	22805-02360	KEY	1
9	2S000-07900	RIGHT-SIDE STICKER	1
8	2S000-13100	BACKLIT RIGHT-SIDE IMAGE	2
7	3S001-01000	COMPLETE NEUTRAL RIGHT SIDE PANEL FOR IS-CREAM	1
7	3S001-01002	RIGHT SIDE PANEL - NEUTRAL COMPLETE IS-CREAM	1
6	2S000-07901	LEFT-SIDE STICKER	1
5	2S000-07300	LED STRIP FOR LIGHTED SIDE PANEL	1
4	3S001-02000	LEFT SIDE PANEL - NEUTRAL COMPLETE IS-CREAM	1
4	3S001-02002	LEFT SIDE PANEL - NEUTRAL COMPLETE IS-CREAM	1
3	2S000-02700	LIGHTED SCREEN	1
3	2S000-02890	SPACER SCREEN (NOT BACKLIT VERSION)	1

QuickGEL

Pos.	Code	Description	Package quantity
2	2S000-15100	BACKLIT LEFT-SIDE IMAGE	2
1	2S000-02800	TRANSPARENT SIDE COVER	1